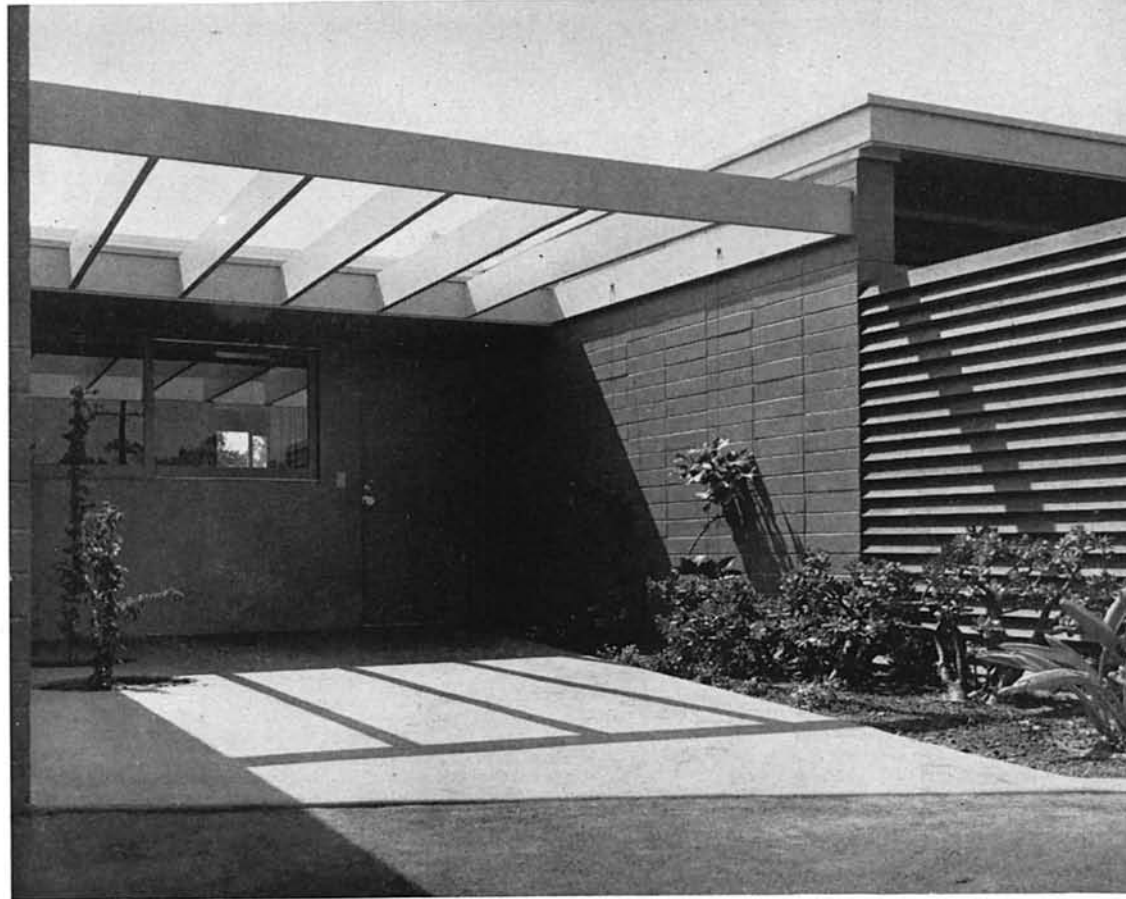


CASE STUDY HOUSE SEVEN
THORNTON M. ABELL, *architect*





CASE STUDY HOUSE SEVEN

The house is located on a slightly irregular, level, but pleasant lot in what was once an orange grove, but is now a comfortable and prosperous community.

The family requirements, as set up, were composed of a typical small family. Intelligent, active people with a young daughter; the father, with interest in amateur photography, and a need of a place to study and work when at home; the mother, whose interests were cooking, sewing and gardening, with musical interests in common with the young daughter. First of all, the requirements should be met with a minimum of cost, but with the greatest possible flexibility and spaciousness, and with a maximum use of indoor-outdoor living. As developed, the arrangement is composed of a three-zone living area: one for study, one for activity, and one entirely out of traffic for relaxation and conversation. The three zones can be combined for entertaining and spacious living, yet can quickly be separated by sliding panels for separate use.

One enters the activity space, which serves for group dining, games and music. It is essentially a traffic area, leading to all parts of the house, and to the terrace, recreation space and garden. There is storage for magazines, card tables, games, and a recess for a piano. The activity area is skylighted to bring a feeling of being outdoors into the center of the house. Adjoining is the dining end of the kitchen, which would be used normally for family dining. It faces the garden, and is a pleasant place to eat at any time of the day. The kitchen also overlooks the garden, and food can be served on the terrace easily. The laundry area is small but compact, with access to an adjoining toilet room and to the terrace, to permit cleaning up after gardening without entering the rest of the house. The toilet, shower and lavatory





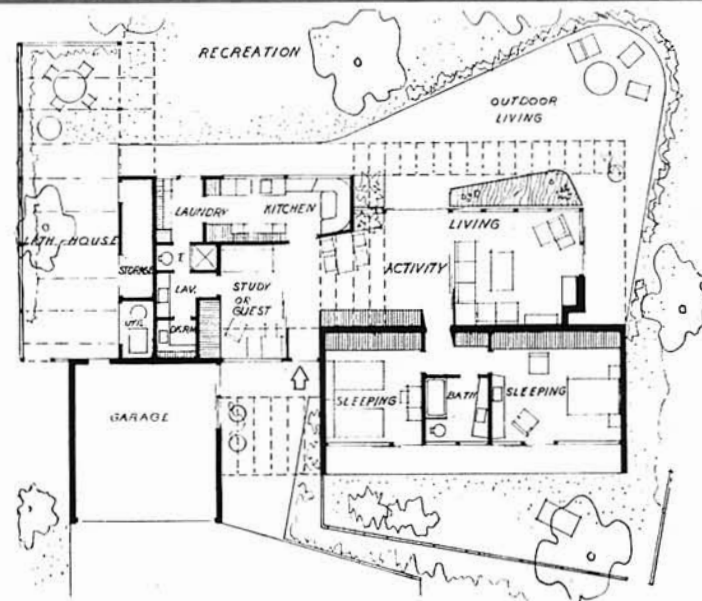
rooms are separated to allow their use as a powder room for guests through the study, or as an extra guest bath in case the study is used as a guest room.

The living area can be shut off completely from the activity space by room-height sliding panels. There is a pool just outside the windows on the terrace, and wide protecting overhang. These things, together with its out-of-traffic location, are intended to provide an atmosphere of serenity and repose for quiet groups and relaxation.

Isolated from the rest of the house by unbroken masonry walls, the sleeping unit faces away from the activity and living areas, and into a quiet enclosed sunning patio. The larger room for the parents, in addition to adequate storage facilities, has a dressing table with lavatory and counter for sewing. The smaller room for the daughter has storage facilities for her special things, as well as providing a quiet place for study. Between is a well-equipped bath.

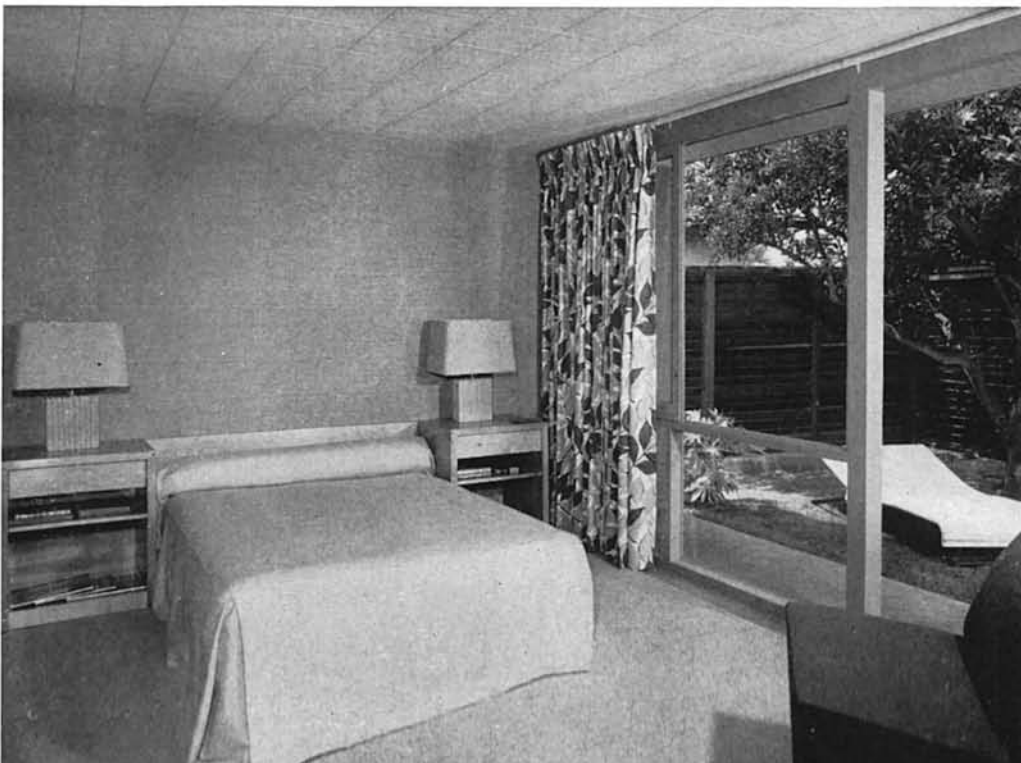
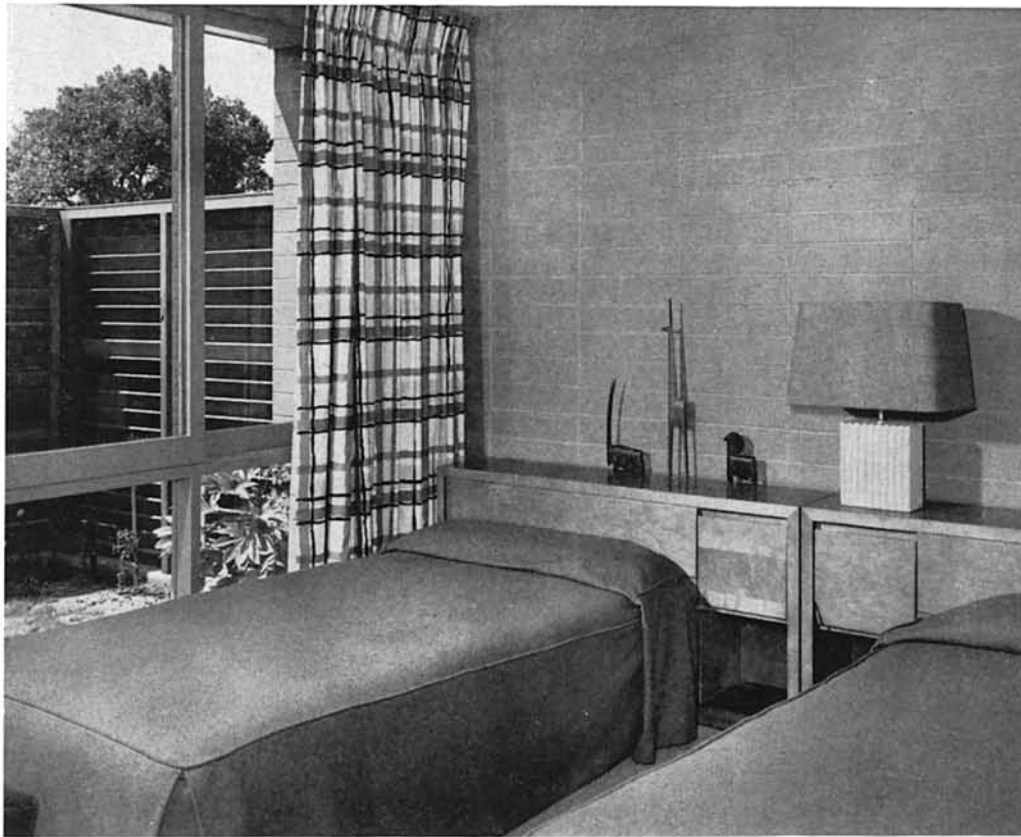
At the front of the house, there is a paved parking area and entrance terrace. The garage, also enclosed with masonry walls, is well-lighted and is connected to the house, with covered access to the entrance and also through the lath house to the service. Storage and utility rooms are entered from the lath house. The lath house is open to the dining terrace, and in hot weather, the tables and chairs may be arranged within. There is a paved recreation court for various kinds of games, adjacent to the terrace and outdoor dining space.

The color of the house is intended to balance the climate of the district and the prejudices of the architect, and is designed to be a comfortable background for living. All



CASE STUDY HOUSE SEVEN

masonry walls, inside and out, are a cool, neutralized green-blue. The roof-plane is a chartreuse-white, both inside and out, including ceilings, overhangs and trellises, to reflect the light. All other exterior trim and plywood walls, including the major living and activity areas inside, are a warm elusive kind of gray, that acquires color on proximity to other colors. Birch doors and sliding panels are natural, and provide pattern as well as relation to furnishings. Cement terraces and asphalt tile floors are a deeper shade of the gray. In the activity, study and living spaces, the furniture is natural birch. Dining chairs are upholstered in an interesting striped fabric of pale green, dark brown and tomato red, gay under the cool light of the skylight. The lounge chairs in the living area are in a dark brown and black tapestry, with a rough-textured chartreuse chair and ottoman. The kitchen cases are white. The saddle colored walls and turquoise curtains are intended to balance the brilliant exposure of this room. The walls of the parents' room are a neutral warm beige-gray, with masonry walls and sand rug. Curtains are patterned, with medium blue, chartreuse and red-brown on a neutral background—good color and a fair pattern. The furniture is a new copper birch color; the spread, pale chartreuse. Upholstered chairs are in a rough red-brown fabric. The child's room has walls of chartreuse and masonry, with sand rug. Curtains are a large good plaid, in light gold, deep chartreuse, gray and dark brown. Furniture is a handsome silver-gray birch. The spread is a rough-textured fabric in deep turquoise, with dark brown on upholstered chairs. The outdoor furniture is grapefruit-colored metal furniture with natural cord, which is good on the gray terrace and with the gray stain on the redwood of the lath house and fences. Planting will eventually become coordinated in shape and color with the scheme.



Case Study House No. 7 may be seen Tuesdays through Saturdays from two to four P.M.; Sundays, two to six P.M.—July and August. The address: 643 Deerfield Rd., San Gabriel.

Architect's Notes on Merit Specifications will be found on Page 8; Merit Specification Directory, Page 10.