

Case Study House Number Sixteen is opening this month in Beverly Hills for an extended public showing.

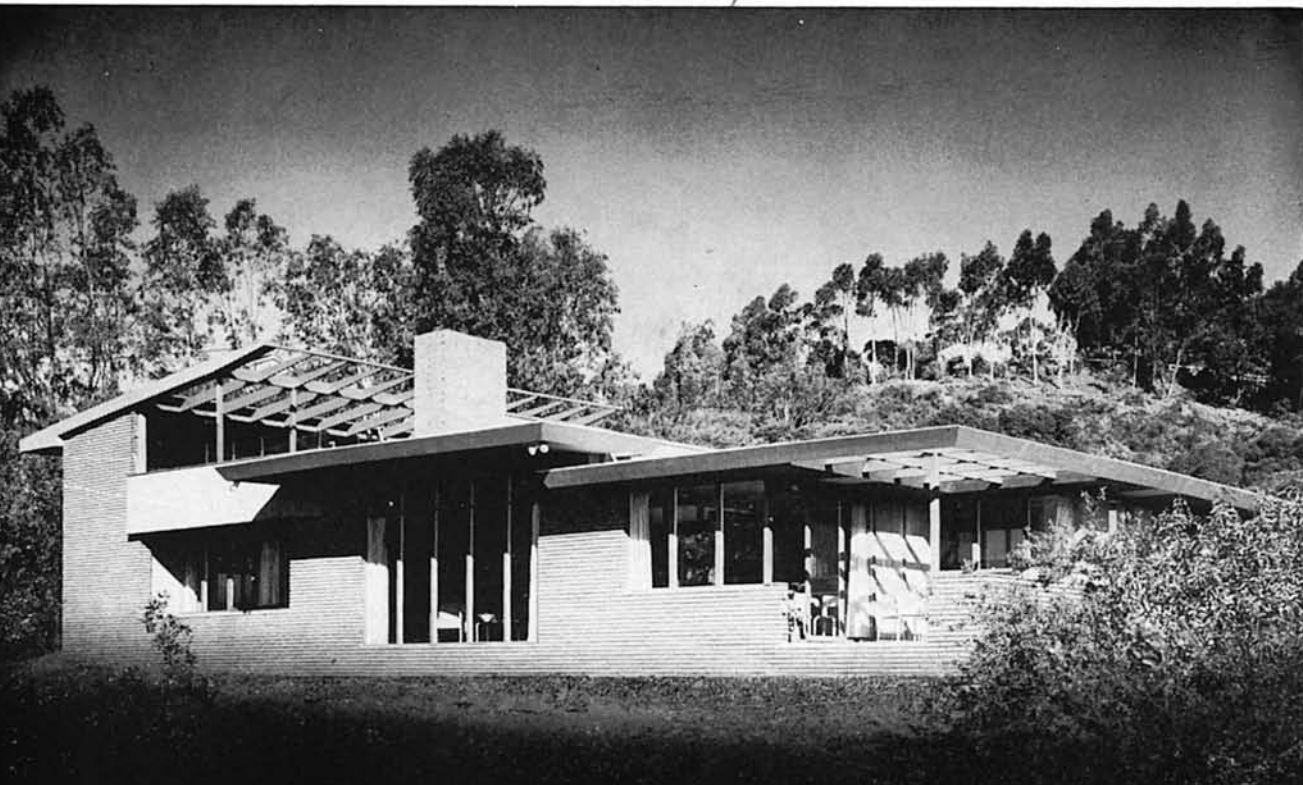


X
12

6

CASE STUDY HOUSE NO. 16

#38

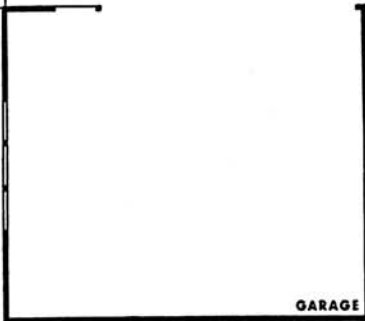
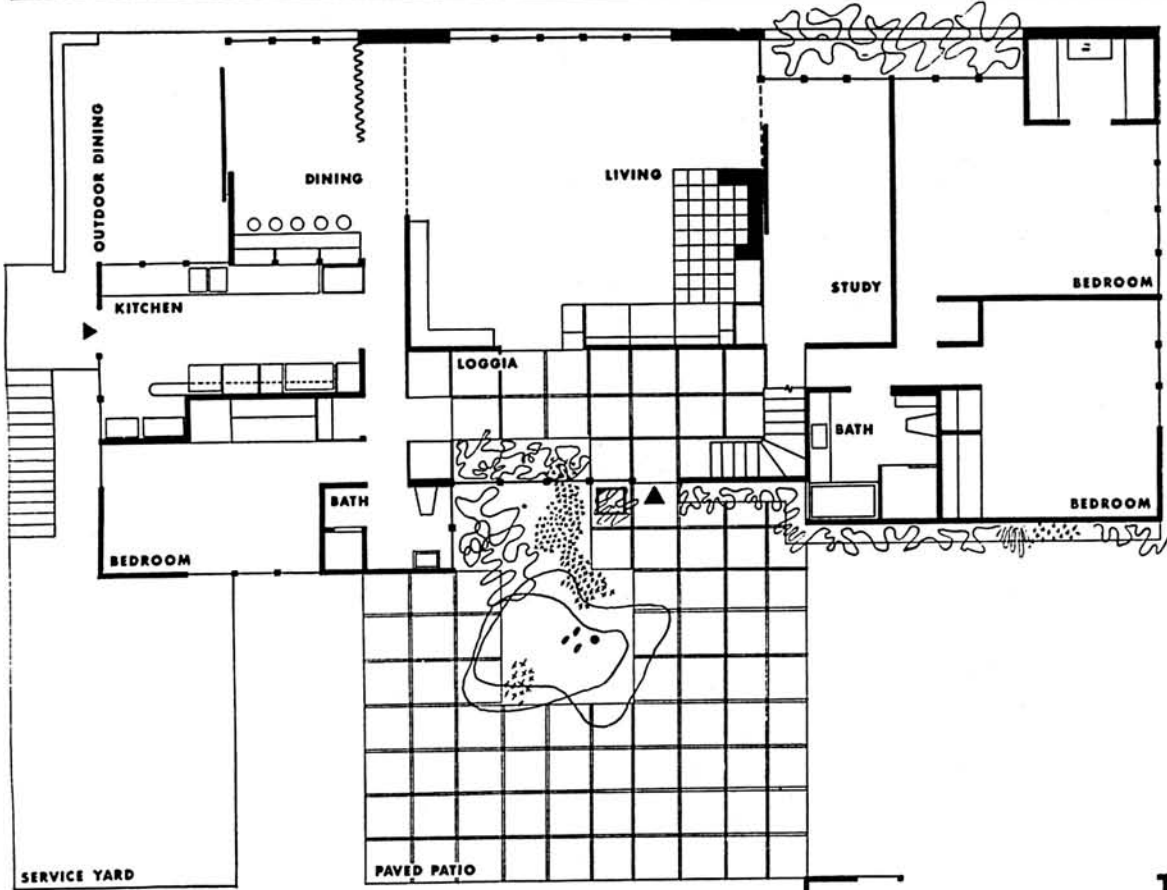


Rodney Walker, Designer

ORIENTATION
Placing of house on southwest corner of three-and-a-half-acre mountain tract was determined by a panoramic view of the city and the ocean. Natural contour of the land, shelter provided by spurs on each side and large existing holly tree also influenced selection of this portion of the site.



24

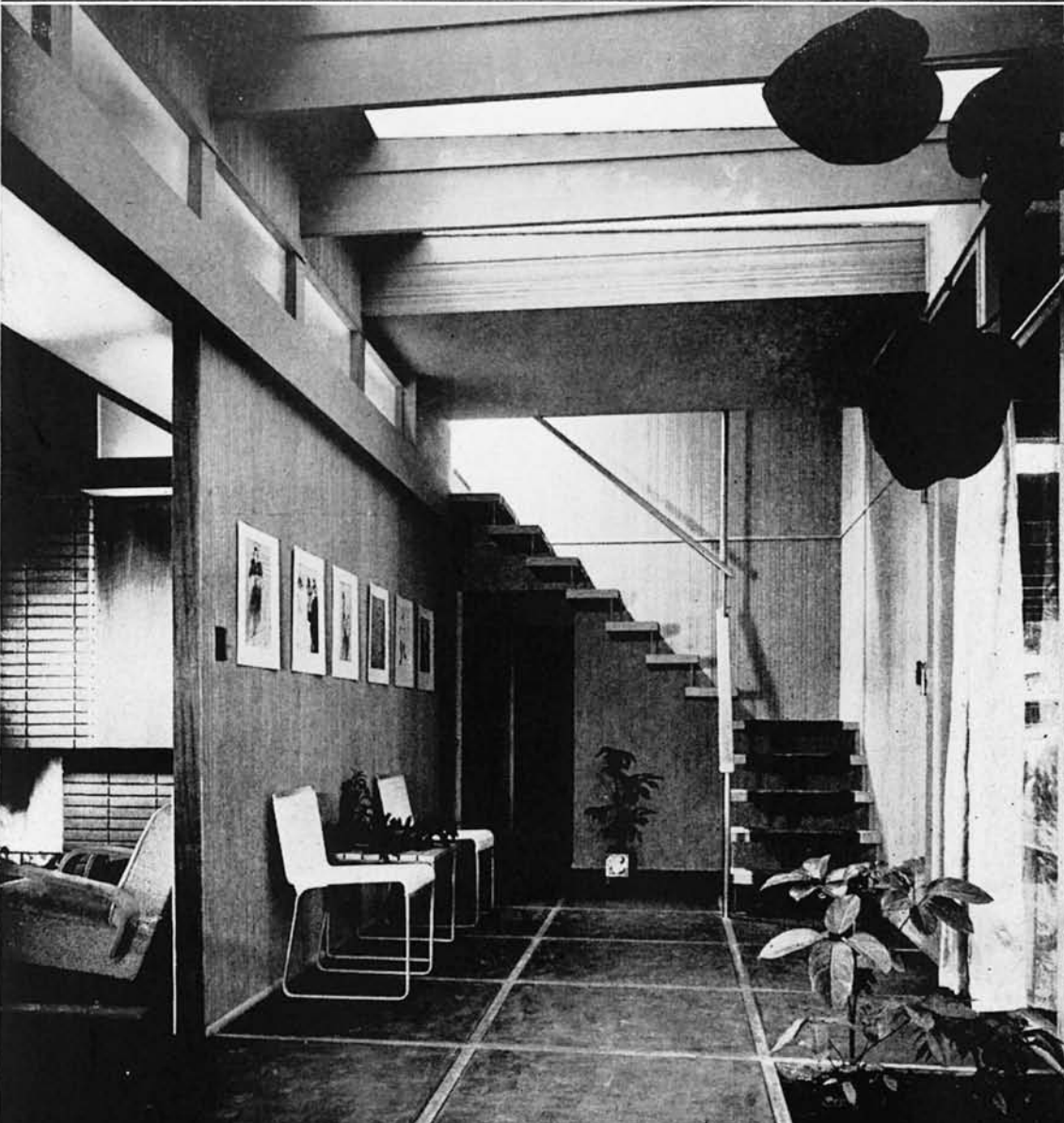


22

EXTERIOR
Predominantly combed plywood. South side of house is brick and glass. Patio on the north side is paved with brown-stained concrete blocks and enclosed with solid redwood wall. A California holly tree surrounded by a planting area dominates the patio. A grape-stake planting wall extends along a ridge south of the house. Retaining walls at south side and bordering driveway are redwood bark. There are terraces below for vegetable garden, berries and fruit trees. Service yard at foot of stairs from kitchen is screened from road, house and outdoor dining and recreation areas.



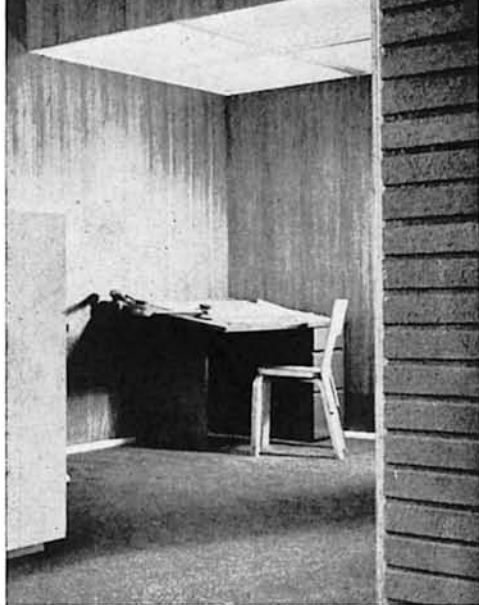
#21



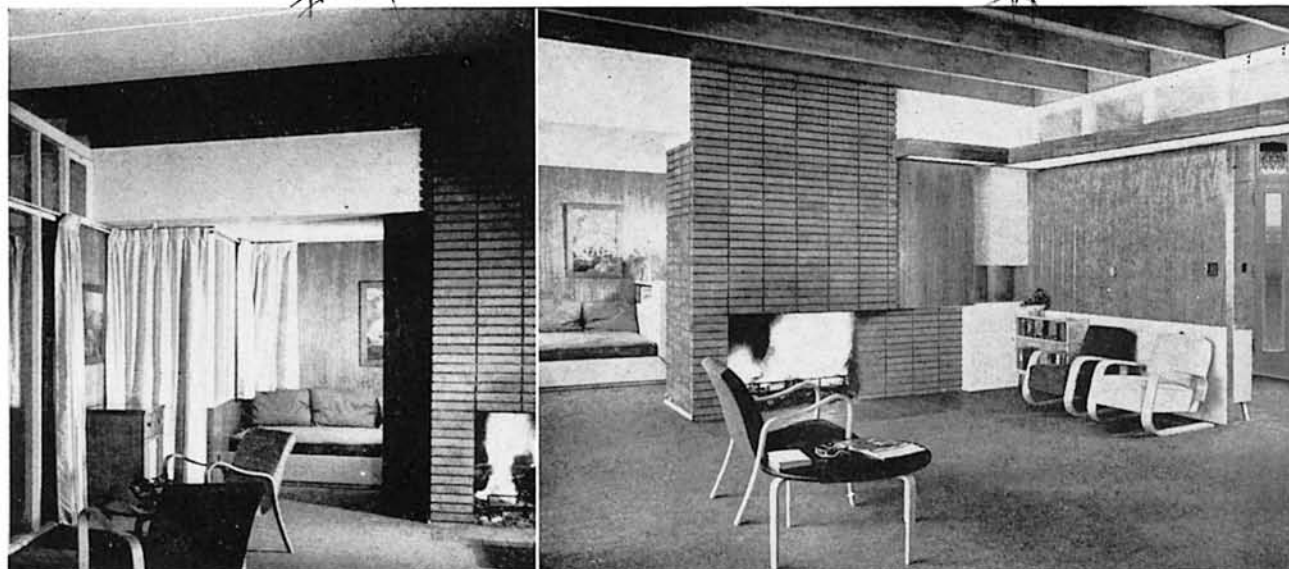
#9

LOGGIA

This room, 21 feet wide and nine feet deep, is a combination entry, garden room and hall from which any room and roof deck can be entered. Circulation is kept free of other rooms. Four factors create an indoor-outdoor bond. The loggia is paved with brown-stained concrete blocks adjoining those with which the patio is surfaced. The patio planting area extends into the room, broken only by three floor to ceiling clear glass panels, each three feet wide. Walls are finished in the same striated plywood used on the exterior. Ceiling is heat-absorbent glass with a greenish tinge giving a cool brilliance to the loggia.



#29



#19

~~#8~~

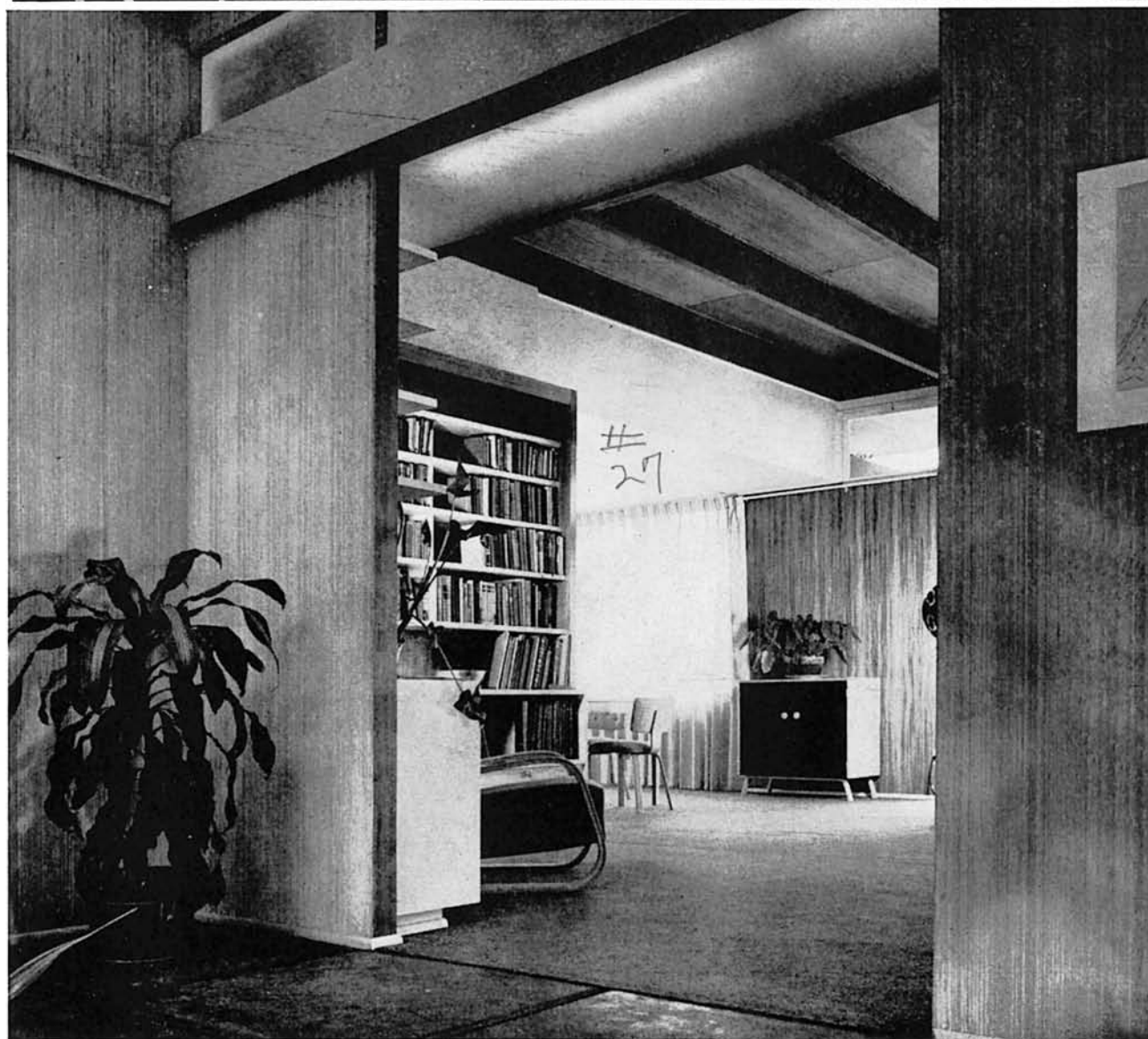
LIVING ROOM

The living room, study and dining space may be used as one large room or divided by means of a sliding panel and a hanging accordion screen. Mahogany plywood panels are used in all three with linen carpet of the same warm brown tone. When divided from the other two rooms, living room is 21 by 27 feet. Ceiling is 11 feet high with exposed 3- x 12-inch joists. Five full length windows front on the principal view. They extend above drapes, admitting light when drapes are closed and providing ventilation through transoms at each end of glazed space.

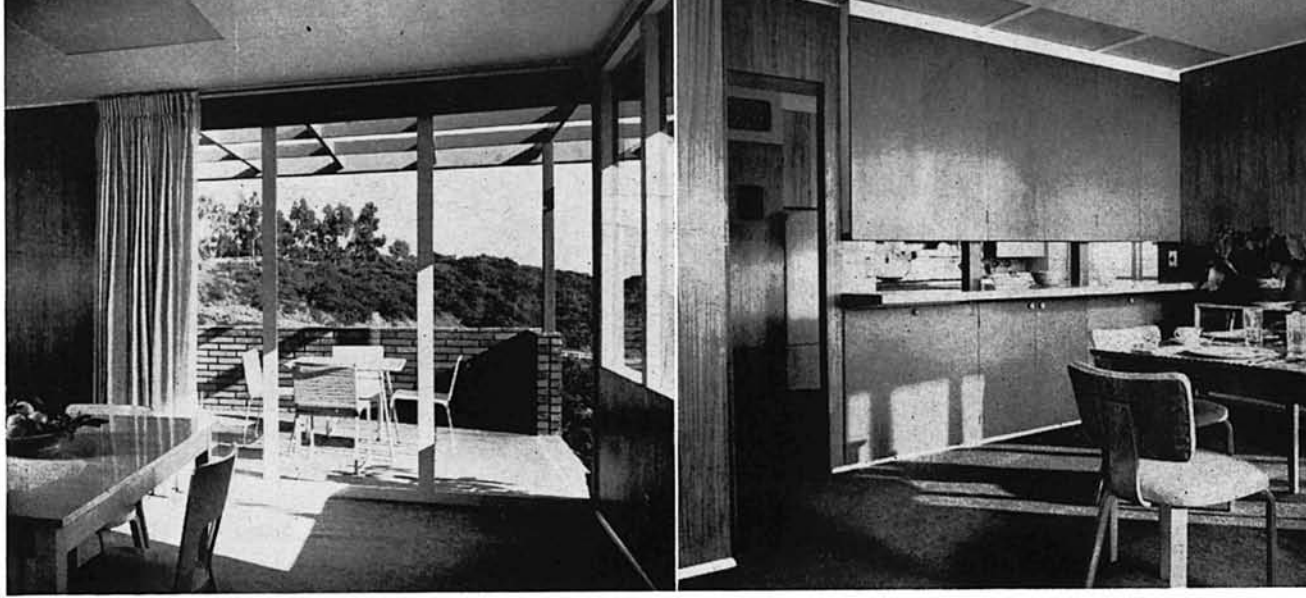
Book and record shelves and closed compartments for magazine filing form a library corner in the living room. Fireplace with an opening four feet wide and three feet high has deeply indented right side. Twelve-inch tapestry-faced ruffle bricks are placed one over the other instead of staggered, keeping vertical lines unbroken. There is a wood box to the right and above the opening.

A 21-foot light shelf carrying fluorescent tubes is part of the living room design. Eight feet high, it lines up with ceilings of adjoining study and dining area. Glass above the shelf between loggia and living room gives light at the back, eliminating glare from the 15-foot bank of front windows.

The 9- x 18-foot study has a large built-in lounge and a clothes closet, and is close to the bath making it usable as a guest room. Opposite the lounge are drawing table, desk and built-ins for a typewriter, blueprints and books. Excellent working light is provided by fluorescent tubes behind



#27



#5

35A



#43

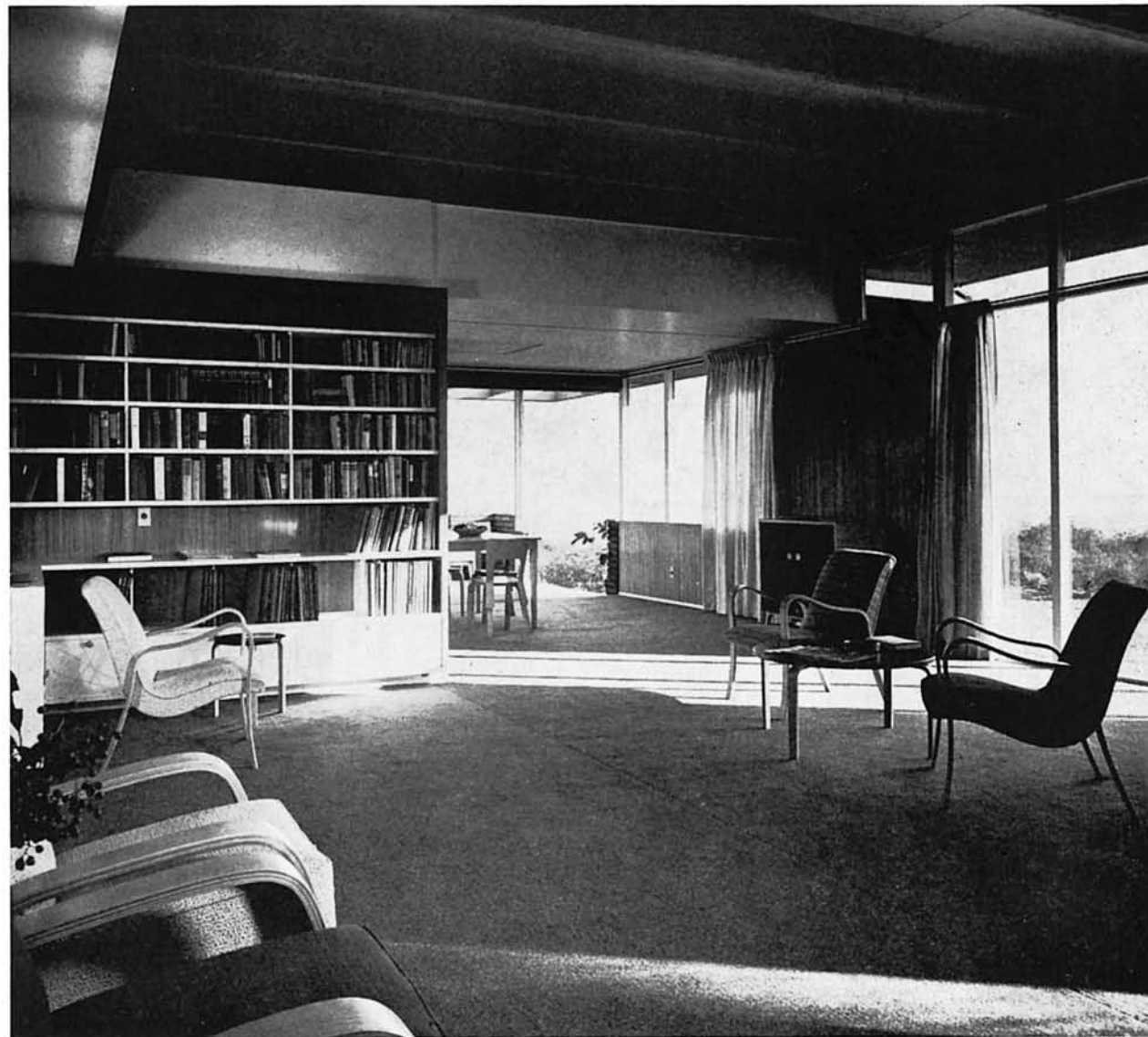
panels of frosted glass in a drop ceiling over the drawing table. A slide-through panel makes the telephone accessible either from study or living room lounge.

Dining space is 9 x 15 feet. A nine-foot-wide sliding panel of glass opens it onto a terrace that also adjoins the kitchen. A roller-type movie screen is built in above the sliding door. Cabinets along the north wall of the dining room open from both the kitchen and dining sides. Below them is an opening nine feet wide through which there is a continuous counter. The counter in the dining room serves as a breakfast bar. Under it are built-ins for card tables, linens and trays. Lighting is fluorescent through flush ceiling panels of frosted glass.

KITCHEN

Chartreuse walls, pale yellow ceiling and prima vera wood counter tops and cabinet doors give this room a warmth equal to the rest of the house. Counter tops and cabinet doors are laminated with a burn-proof, stain-proof, clear plastic surface over the wood. The room is 9 x 21 feet with an added three feet of width at one end forming an area in which a child can play beyond the working space. Windows facing south and east keep the room brightly lighted during the day. Lighting fixtures are circular fluorescent tubes over sink, stove and wide space at end. Floor covering is dark brown asphalt tile.

There are no cabinets over the sink, but they line the opposite wall over refrigerator, stove and washer. All cabinet and drawer faces are flush


~~14~~

with no exposed hardware. Utensils most often used hang above the stove from the bottom of a shelf for canisters. The kitchen is equipped with a built-in dish washer. A fully automatic washing machine eliminates necessity of a service porch—the laundry is part of the kitchen. A chute in one cabinet carries cans and other non-inflammable trash to an outside container under the stairs leading to the service yard.



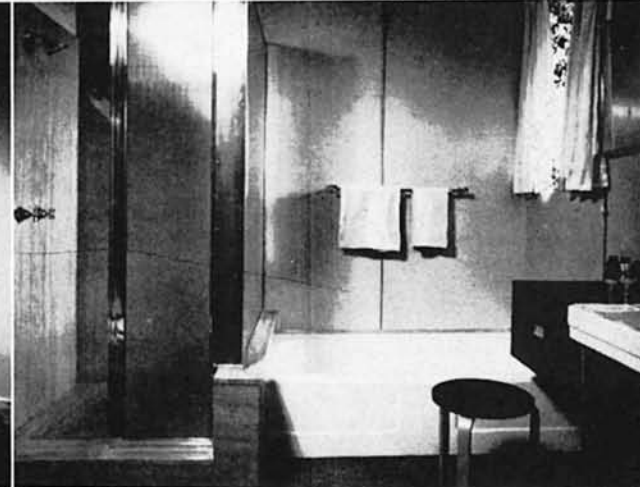
BEDROOMS

Bedroom Number 1 is spacious—15 x 18 feet—with a sitting area next to nine feet of windows facing the view to the south. The room is finished in bold-grained satinwood plywood. Blue carpet with long wool nap extends from wall to wall.

An oversize bed (7 feet x 5 feet-8 inches) has shelves and cabinets built around it. A light shelf over the bed gives indirect light for general illumination and direct reading light. Windows back of the bed are clear at the top but obscure below for privacy. There are a dressing table and large mirror across from the bed. The closet, 6 x 9 feet, serves as a dressing room.

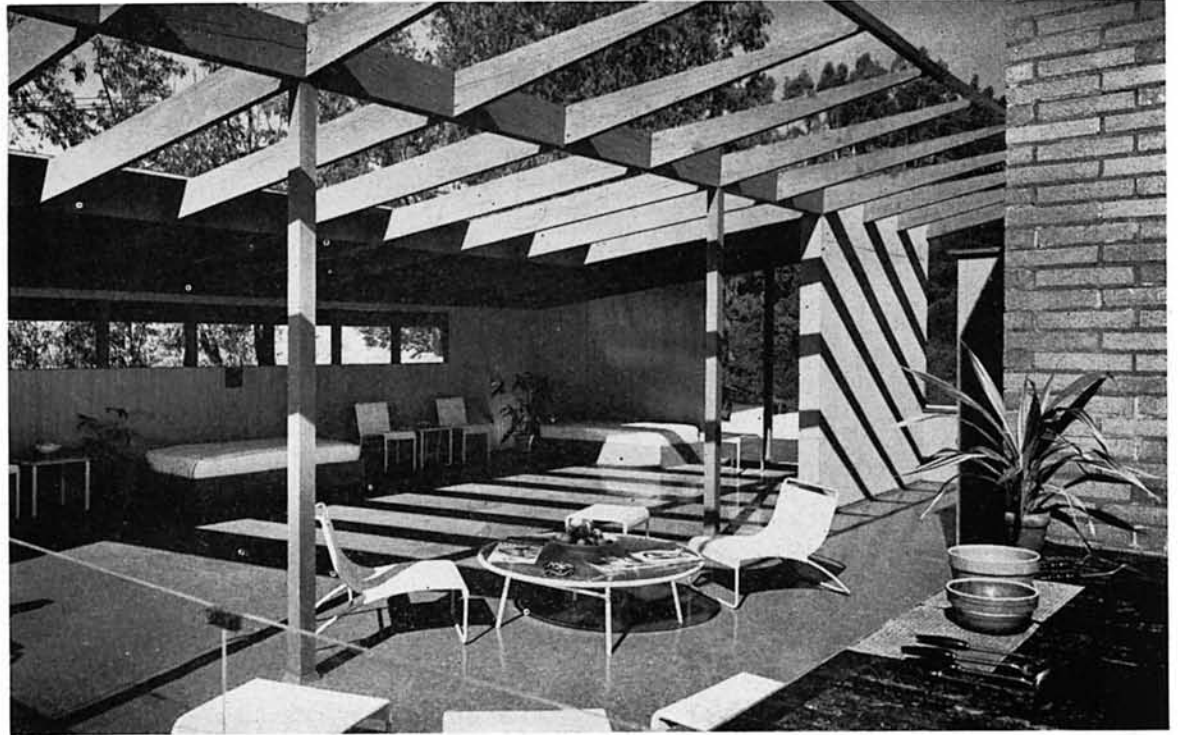
Bedroom Number 2, the child's room, is 12 x 15 feet. View is west against eucalyptus trees and green hill. All opening windows are high to eliminate drafts. Colors in the room are yellow-green with natural wood (Douglas fir) trim and deep tan carpet. The room has a built-in cantilever desk and shelves for toys and later for collections. Wardrobe closet has a low clothes bar to enable the child to do his own picking up. Drawers are built-in beside the closet. A nine-foot-wide panel of frosted glass over the closet illuminates the room indirectly from a light inside the closet.

Bedroom Number 3 is apart from other bedrooms and is intended either for guests or servant. It has a separate bath. The room, 9 x 15 feet, has a view of the city to the east and a tree covered canyon to the north. Colors are turquoise with cocoa brown ceiling and cabinets. Built-in drawers, cabinets and lighting are similar to installations in second bedroom.



Both bathrooms have linen-textured plastic walls and asphalt tile floor covering. Cabinets are black plastic. Electric wall heaters give instantaneous warmth. Both rooms have marble showers. Oversized shower in master bath has two walls of obscure glass. Shower in second bath is standard sized stall with obscure glass door.

1000-30



ROOF DECK

A cantilever stairway leads from the loggia to a 1000-square-foot deck with glass and clear plastic windbreaks and enough roof covering for furniture protection. The roof line extends out over the open portion of the deck with cantilever beams forming a trellis for a vine. Beside a brick fireplace with opening three feet wide and four and a half feet high are sink and cabinets for barbecue equipment. Furniture includes beds for outdoor sleeping, chairs and tables for lounging and buffet eating and game equipment. The roof deck commands a magnificent panoramic view of most of Los Angeles, the ocean and coastal islands.

#18

1000
#32

DETAILS

An unfinished 12- x 21-foot room below the rest of enclosed space of house is used for storage and can later be finished into extra bedroom. Closet off loggia has pegs to hold attachments of vacuum cleaner. The closet is lighted in daytime through a vertical panel of frosted glass. At night a bulb inside closet lights the loggia through this panel.

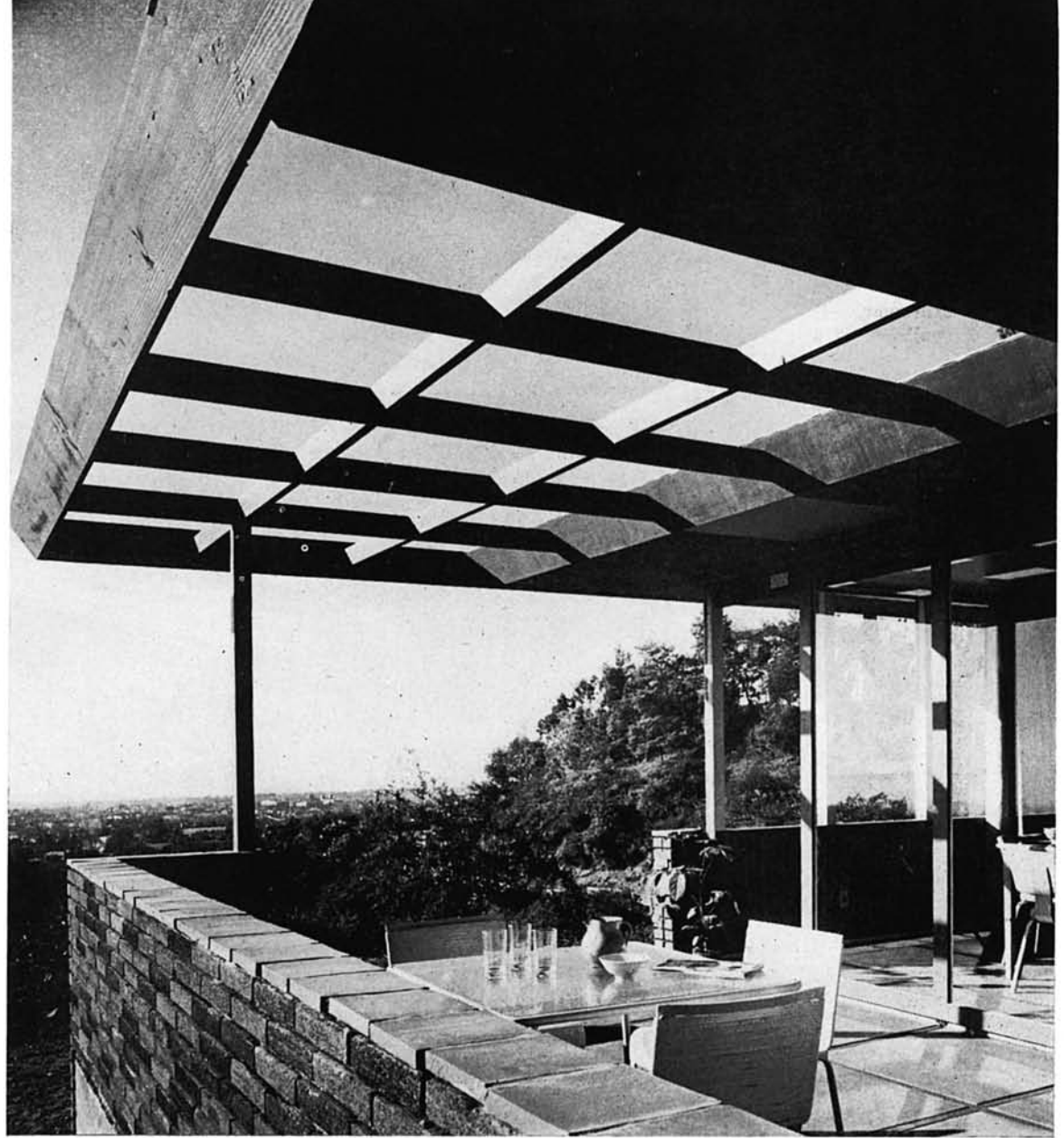
Linen closet between first and second bedrooms has sliding shelves. A pull-out shelf at bottom is intended for use in sorting linens.

RADIANT HEAT

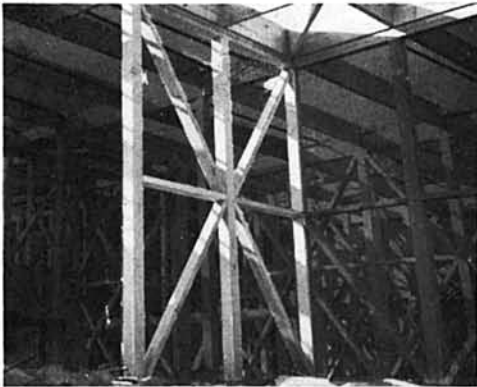
Coils of one-inch black pipe are located in the ceiling, four inches above the plywood. Back of the plywood is painted dull black to absorb the heat radiations. Above the coils is aluminum foil to reflect heat downward and also distribute it from coils. There are three inches of rock wool insulation above the foil. Each of seven zones in the house may be controlled independently of the others. A power circulator was installed above the gas-fired water heater for quick heating, but gravity circulates water rapidly enough for normal needs. The system may be controlled by thermostat or automatic time switch.

CONSTRUCTION

Wood framing is based on a three-foot module. Half-inch holes are drilled in top and bottom of each 4- x 4- inch post, every three feet (through ceiling joists where they are to be joined to plates. Hardwood dowls inserted in the holes automatically



1000-39



1000, # 29

position and line up all structural members. Enclosed wall sections contain a fire block and two diagonal braces every three feet. Framing for doors and windows is unnecessary since the edge-to-edge distance between posts is standard two feet, eight inches. Joists and posts form unbroken lines. Glass for fixed windows is slipped into grooves in the posts and puttied, leaving vertical supports clean. The foot-wide strip of plywood cut from each standard sheet is used for shelving and small floor areas.

Striated plywood and mahogany plywood are butt jointed. Satinwood panels in master bedroom are notched at the back to carry a recessed batten. All other panels have V grooves at the joints except third bedroom and bathrooms where $\frac{3}{8}$ -inch half-round battens were used. Floor coverings throughout are laid directly on well sanded two-inch tongue and groove sub-flooring.

Case Study House No. 16 is located at 9945 Beverly Grove Drive, Beverly Hills. Hours of showing are and Sunday, 2 to 6 P.M. Closing date is April 15.

