

COVER: FROM "COMPARTMENT DWELLERS," AN AQUA TINT BY JOHN PHILLIPS.

arts & architecture

EDITOR: JOHN ENTENZA

EDITORIAL ASSOCIATES

Benjamin Baldwin
Herbert Matter
Charles Eames
Peter Yates
Bernard Rosenthal
F. M. Brown
Grace Clements
Robert Joseph

STAFF PHOTOGRAPHERS

Harry Baskerville
Ralph Samuels
Julius Shulman

EDITORIAL ADVISORY BOARD

Dr. Grace L. McCann Morley
William Wilson Wurster, A.I.A.
Ernest Born, A.I.A.
Richard J. Neutra, A.I.A.
Eero Saarinen A.I.A.
Gardner A. Dailey, A.I.A.
Sumner Spaulding, F.A.I.A.
Palmer Sabin, A.I.A.
Edgar Bissantz, A.I.A.
H. Roy Kelley, F.A.I.A.
Gordon B. Kaufman, F.A.I.A.
William Schuchardt, F.A.I.A.
Whitney R. Smith, A.I.A.
Lawrence E. Mawn, A.I.A.
John Rex, A.I.A.
Mario Corbett, A.I.A.
Fred Langhorst, A.I.A.
John Funk, A.I.A.
Gregory Ain, A.I.A.
Gyorgy Kepes
Marcel Breuer
Konrad Wachsmann
Serge Chermayeff
Raphael Soriano
Ray Eames
Harriet Janis
Garrett Eckbo
Edgar Kaufman, Jr.
Dorothy Liebes
Claire Falkenstein
Harold W. Grieve, A.I.D.
Ralph D. Cornell, F.A.S.L.A.

ADVERTISING MANAGER

Robert Cron, 3305 Wilshire Blvd.
Los Angeles, Federal 1161
NEW YORK
Arthur Morton Good
545 Fifth Avenue, MUrray Hill 2-0914
SAN FRANCISCO
Duncan A. Scott
Mills Tower, Garfield 1-7950



Member Controlled Circulation Audit

CONTENTS FOR AUGUST 1948

ARTICLES

Form and Motion—Gyorgy Kepes 26

ARCHITECTURE

House by Edward Barnes, Harry Weese, Architects 25

Office Building by Gregory Ain, Architect, Joseph Johnson
and Alfred Day, Collaborating 30

Country House by S. Robert Anshen and
Wm. Stephen Allen, Architects 33

Boat House by Rudolph & Twitchell, Architects 34

Community Church by Ralph Bowerman, Architect 37

SPECIAL FEATURES

Sculpture by David Smith 22

Wood Shapes, James Prestini 27

Textiles, Astrid Sampe-Hultberg 36

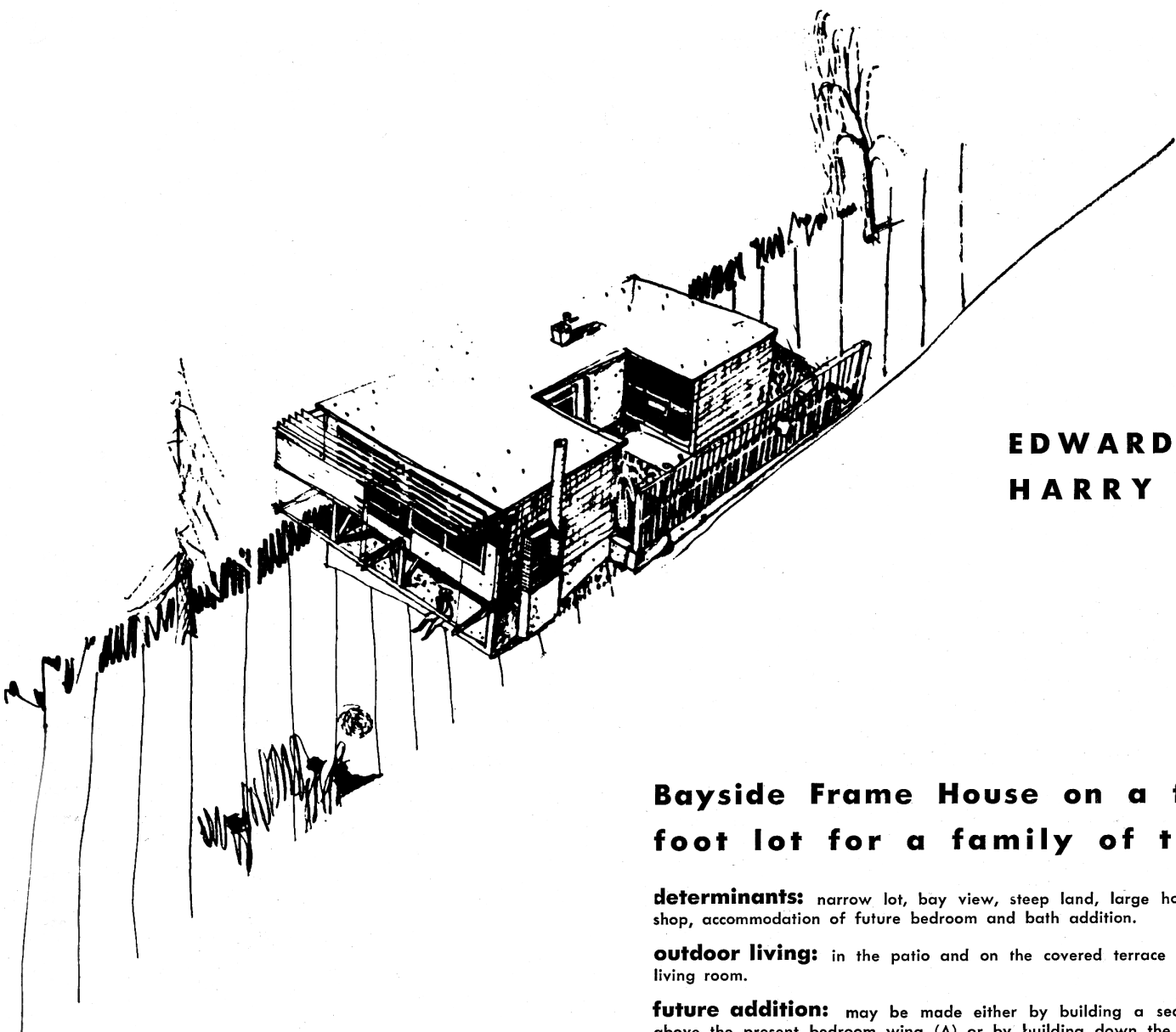
Art 6

Books 16

Cinema 17

Notes in Passing 21

New Product Literature and Information 39



EDWARD BARNES, architect
HARRY WEESE, architect

Bayside Frame House on a forty foot lot for a family of three

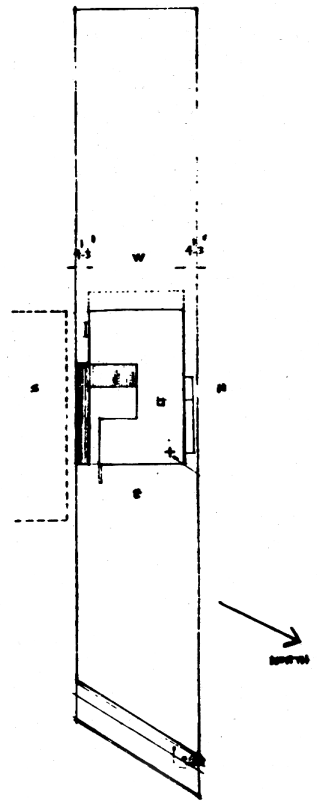
determinants: narrow lot, bay view, steep land, large home workshop, accommodation of future bedroom and bath addition.

outdoor living: in the patio and on the covered terrace below the living room.

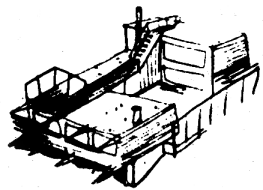
future addition: may be made either by building a second story above the present bedroom wing (A) or by building down the slope (B).

materials: shingles and stucco on wood frame. Projected wood sash. Plastered walls and ceilings. Fireplace wall redwood.

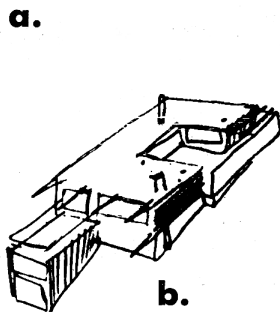
This California house was designed by two eastern architects who gave special attention to the problem of the glare of the sun over the bay. A rolling blind held free of the building on outriggers with fixed louvers above successfully eliminates, when necessary, the direct sun rays without darkening the rooms. The blind controls are by pulley and cable. Wire guide stays prevent the blind from blowing about in the wind. The lower outriggers carry a portable plank and act as scaffold from which to wash the windows.



PLOT DIAGRAM

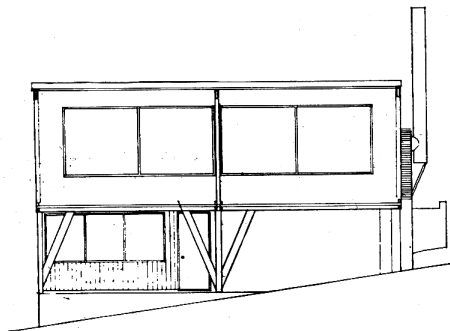


expansion

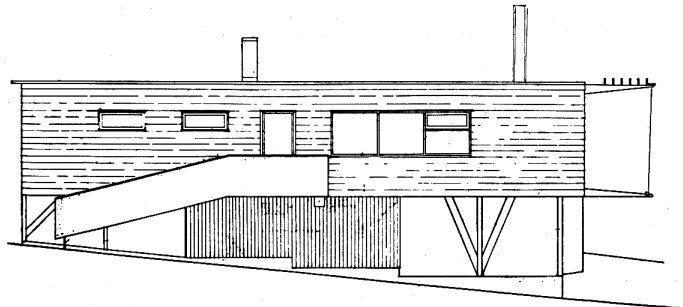


b.

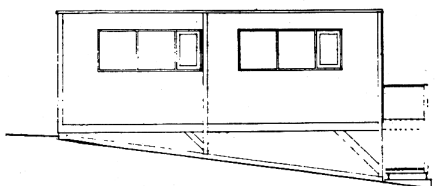
west



north



east



south

