

# arts & architecture

EDITOR: JOHN ENTENZA

EDITORIAL ASSOCIATES

Benjamin Baldwin  
Herbert Matter  
Charles Eames  
Peter Yates  
Bernard Rosenthal  
F. M. Brown  
Grace Clements  
Robert Joseph

STAFF PHOTOGRAPHERS

Harry Baskerville  
Ralph Samuels  
Julius Shulman

EDITORIAL ADVISORY BOARD

Dr. Grace L. McCann Morley  
William Wilson Wurster, A.I.A.  
Ernest Born, A.I.A.  
Richard J. Neutra, A.I.A.  
Eero Saarinen A.I.A.  
Gardner A. Dailey, A.I.A.  
Sumner Spaulding, F.A.I.A.  
Palmer Sabin, A.I.A.  
Edgar Bissantz, A.I.A.  
H. Roy Kelley, F.A.I.A.  
Gordon B. Kaufman, F.A.I.A.  
William Schuchardt, F.A.I.A.  
Whitney R. Smith, A.I.A.  
Lawrence E. Mawn, A.I.A.  
John Rex, A.I.A.  
Mario Corbett, A.I.A.  
Fred Langhorst, A.I.A.  
John Funk, A.I.A.  
Gregory Ain, A.I.A.  
Gyorgy Kepes  
Marcel Breuer  
Konrad Wachsmann  
Serge Chermayeff  
Raphael Soriano  
Ray Eames  
Harriet Janis  
Garrett Eckbo  
Edgar Kaufman, Jr.  
Dorothy Liebes  
Claire Falkenstein  
Harold W. Grieve, A.I.D.  
Ralph D. Cornell, F.A.S.L.A.

ADVERTISING MANAGER

Robert Cron, 3305 Wilshire Blvd.  
Los Angeles, Federal 1161  
NEW YORK  
Arthur Morton Good  
545 Fifth Avenue, MUrray Hill 2-0914  
SAN FRANCISCO  
Duncan A. Scott  
Mills Tower, Garfield 1-7950



Member Controlled Circulation Audit

## CONTENTS FOR OCTOBER 1948

### ARTICLES

- Plastics and Illumination by James Davis 24  
Redevelopment of a Coastal City by Simon Eisner 37

### ARCHITECTURE

- Apartment for Nurses by Sumner Spaulding, F.A.I.A.,  
John Rex, A.I.A. 30  
House and Studio in Brazil by Oswald A. Bratke,  
Architect 32  
Drive-in Restaurant by John Lautner, designer 34  
Office Building by Gregory Ain, Architect;  
Joseph Johnson and Alfred Day, Collaborating 36

### SPECIAL FEATURES

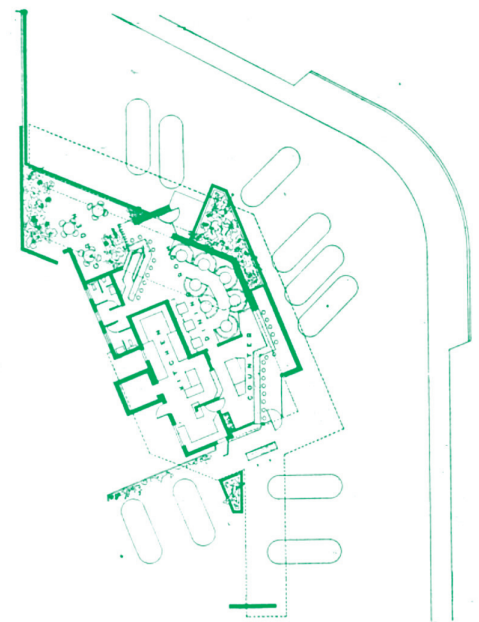
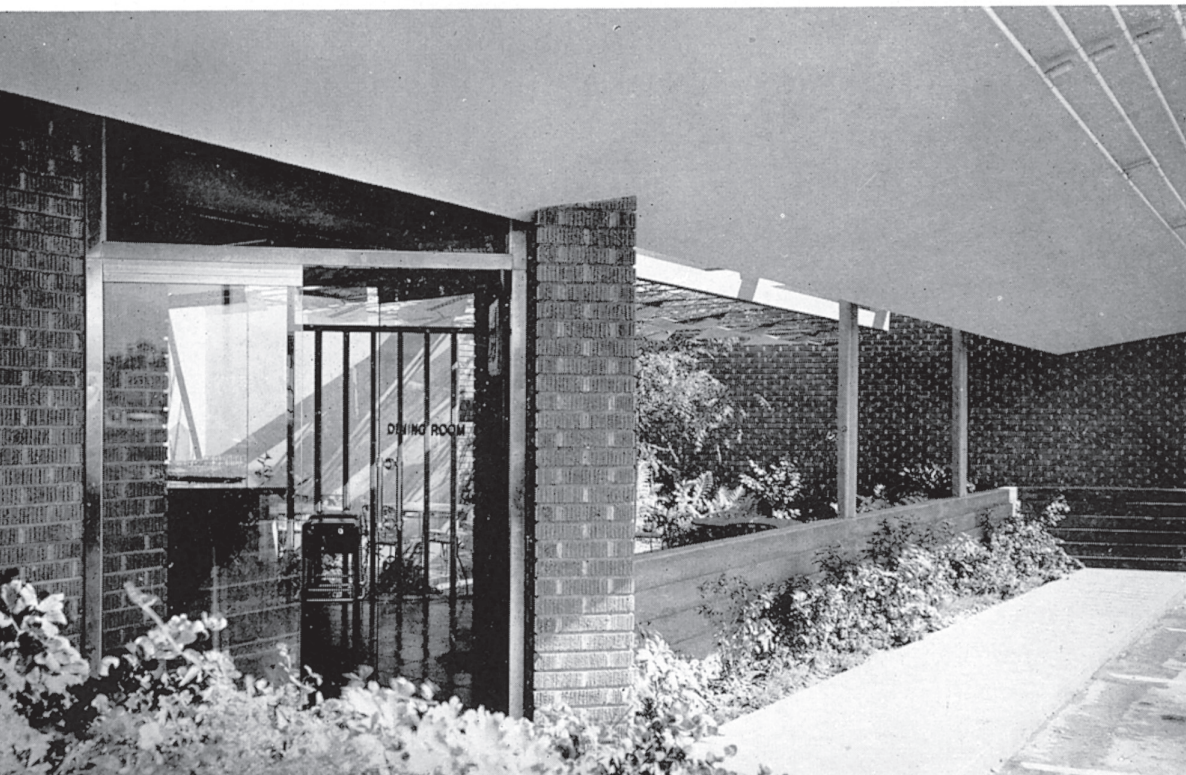
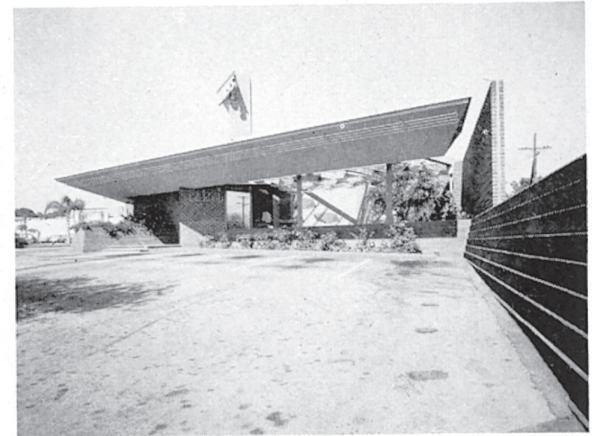
- New Lamps are Lit in Europe, Edgar Kaufmann, Jr. 28  
"Scale of A Carp"—photograph by Milah Birnie 29  
Art 8  
Books 12  
Music 16  
Notes in Passing 23  
New Product Literature and Information 43  
Index of Advertisers 58



This remodeled Drive-in Restaurant, inside and out, is distinguished by the mark of the confident planning of the designer. Facilities included are: a lunch counter, fountain, dining room, and bar. Visible to automotive traffic as a Drive-in Restaurant, the building requires but a minimum of signs and neon lighting.

The dining room and bar are open to a garden for outdoor dining and waiting. An incombustible metal trellis forms a patterned acoustic ceiling in the dining room and extends into the garden, providing diffused light inside and out.

Natural textures and a warm color scheme, together with the planting, contribute to an inviting atmosphere day and night. The large concrete planting boxes, integral with the building, were formed with rough lumber and stained.



photographs: Garber-Sturges



# drive-in restaurant john lautner *designer*