

# arts & architecture

EDITOR: JOHN ENTENZA

EDITORIAL ASSOCIATES

Benjamin Baldwin  
Herbert Malter  
Charles Eames  
Peter Yates  
Bernard Rosenthal  
F. M. Brown  
Grace Clements  
Robert Joseph

STAFF PHOTOGRAPHERS

Harry Baskerville  
Ralph Samuels  
Julius Shulman

EDITORIAL ADVISORY BOARD

Dr. Grace L. McCann Morley  
William Wilson Wurster, A.I.A.  
Ernest Born, A.I.A.  
Richard J. Neutra, A.I.A.  
Eero Saarinen, A.I.A.  
Gardner A. Dailey, A.I.A.  
Sumner Spaulding, F.A.I.A.  
H. Roy Kelley, F.A.I.A.  
Welton Becket, A.I.A.  
Whitney R. Smith, A.I.A.  
John Rex, A.I.A.  
Mario Corbett, A.I.A.  
Fred Langhorst, A.I.A.  
John Funk, A.I.A.  
Gregory Ain, A.I.A.  
George Nelson  
Gyorgy Kepes  
Marcel Breuer  
Konrad Wachsmann  
Serge Chermayeff, A.I.A.  
Raphael Soriano, A.I.A.  
Ray Eames  
Harriet Janis  
Garrett Eckbo  
Edgar Kaufman, Jr.  
Dorothy Liebes  
Claire Falkenstein  
Harold W. Grieve, A.I.D.

ADVERTISING MANAGER

Robert Cron, 3305 Wilshire Blvd.  
Los Angeles, Dunkirk 3-1161

SAN FRANCISCO

Duncan A. Scott  
Mills Tower, Garfield 1-7950

## CONTENTS FOR JUNE 1951

### ARTICLES

Reconstruction in Milan, Italy by Bernard Rosenthal	20
Restricted Architecture by Richard Neutra	26
Speech by Konrad Wachsmann	29
Inez Johnston by Jules Langsner	31

### ARCHITECTURE

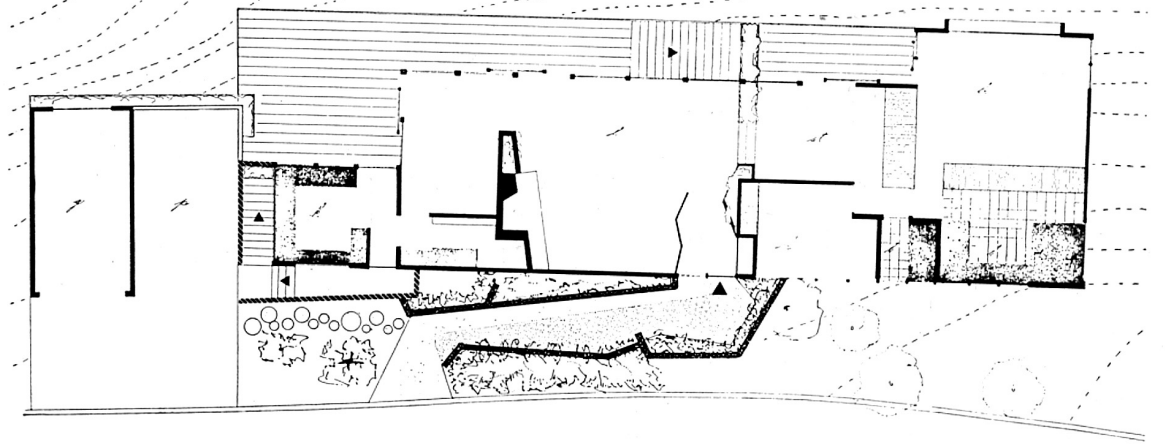
House by Richard Neutra, Architect	26
Office Building by Richard Neutra, Architect	28
House by Greta Magnusson Grossman, Designer	34

### SPECIAL FEATURES

Art	6
Cinema	8
Music	10
Records	15
Contemporary Objects	17
Marino Marini, Sculptor	25
Notes in Passing	19
Gargoyles, Inez Johnson	30
Furniture, Van Keppel Green	32
Currently Available Product Literature and Information	36

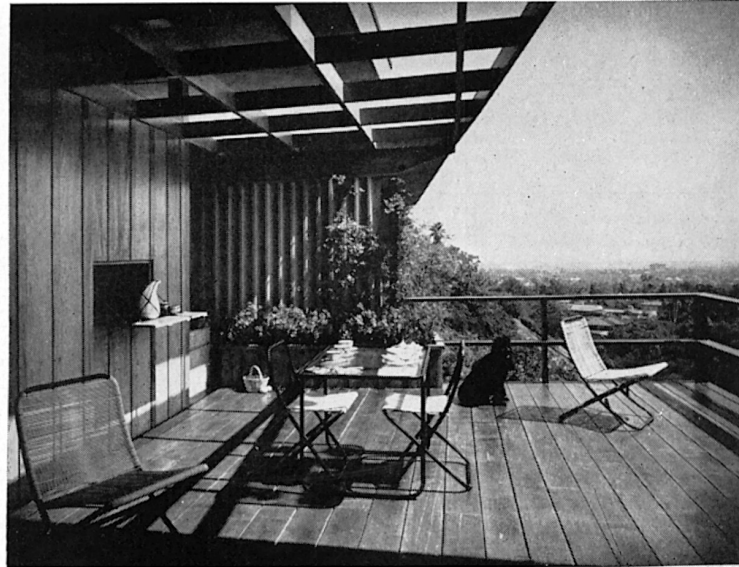
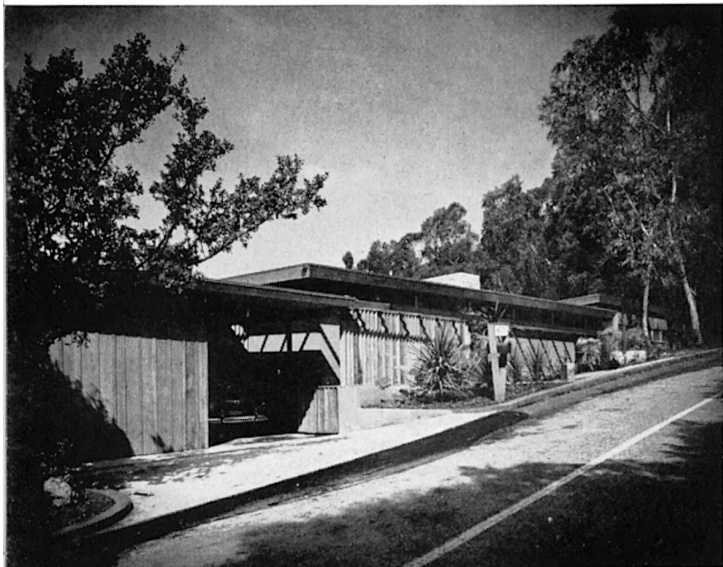


Member Controlled Circulation Audit

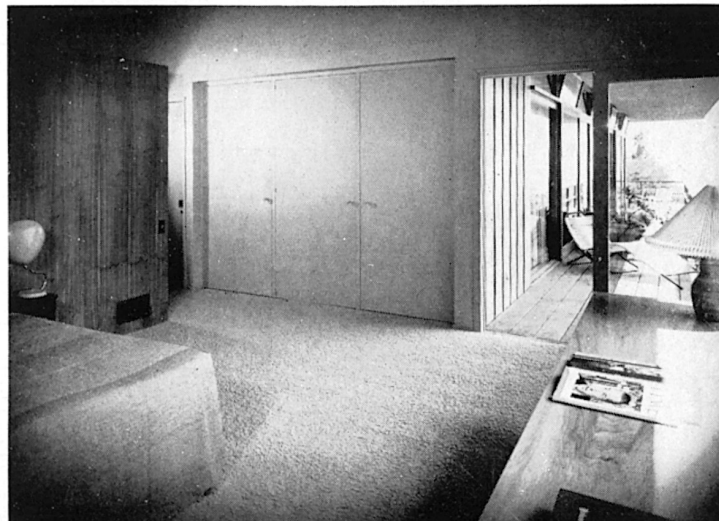
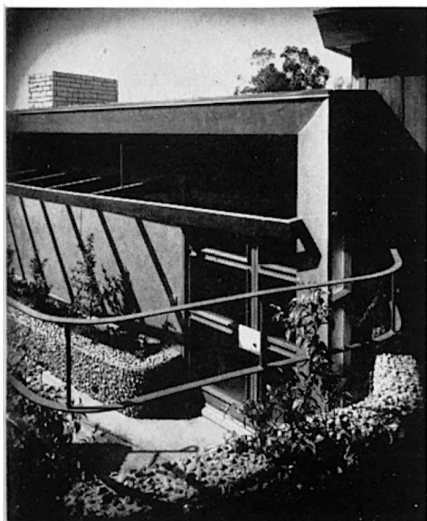


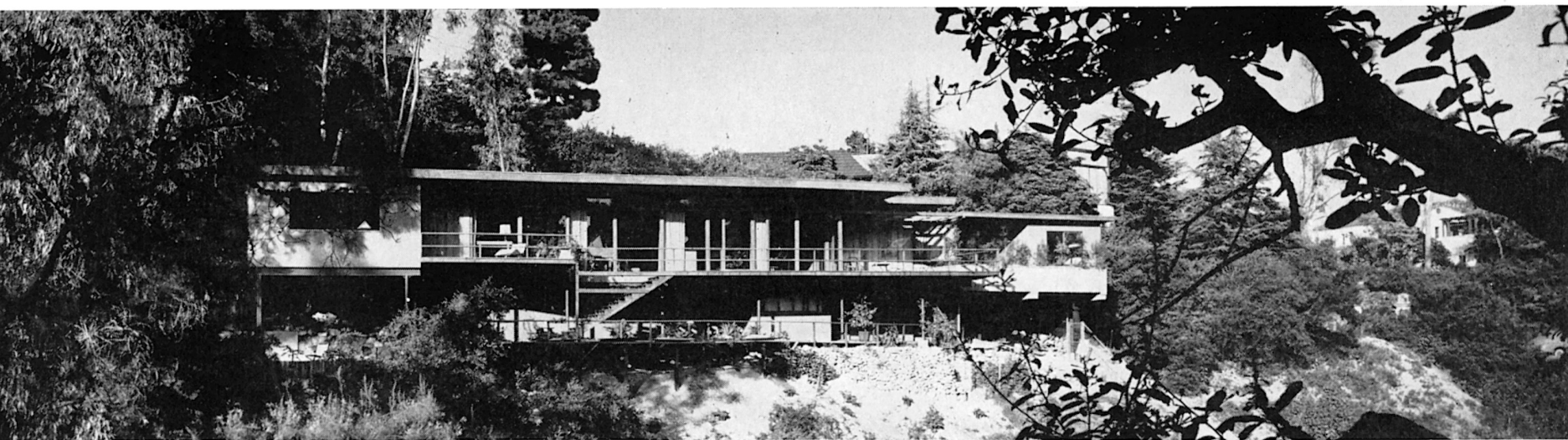
HOUSE BY GRETA MAGNUSSON GROSSMAN, designer

TED JAEHN: STRUCTURAL ENGINEER  
ECKO, ROYSTON & WILLIAMS: LANDSCAPING



PHOTOGRAPHS BY DONALD J. HIGGINS





This house shown in an earlier issue as a project in line drawings is now completed. On a site with the free wide ranging view over the city, it was a problem of the designer to overcome a twelve-foot setback which left little other than a steep incline on which to build. The canyon side of the house is supported entirely by steel beams on steel posts. The balcony on the hill side surrounds the entire living area. At the lower garden level an independent service room has been developed and the under house area remains a future project for recreation purposes.

The living room is carpeted in gray beige, the walls sandfinished white plaster, ceiling gray-green, and these colors are used consistently throughout the house. Furnishings by Robsjohn Gibbings and Greta Magnusson Grossman.

