

# arts & architecture

EDITOR: JOHN ENTENZA

EDITORIAL ASSOCIATES

Dore Ashton  
Flora M. Brown  
Herbert Matter  
James Fitzsimmons  
Jules Langsner  
Peter Yates  
Bernard Rosenthal

LAYOUT

John Follis  
Charles Kratka  
Frederick A. Usher, Jr.

STAFF PHOTOGRAPHERS

Harry Baskerville  
Julius Shulman

EDITORIAL ADVISORY BOARD

Dr. Grace L. McCann Morley  
William Wilson Wurster, A.I.A.  
Walter Gropius, A.I.A.  
Ernest Born, A.I.A.  
Richard J. Neutra, F.A.I.A.  
Welton Becket, F.A.I.A.  
Victor Gruen, A.I.A.  
Marcel Breuer, A.I.A.  
Gardner A. Dailey, A.I.A.  
H. Roy Kelley, F.A.I.A.  
Whitney R. Smith, A.I.A.  
John Rex, A.I.A.  
Mario Corbett, A.I.A.  
A. Quincy Jones, A.I.A.  
Fred Langhorst, A.I.A.  
Raphael Soriano, A.I.A.  
George Vernon Russell, A.I.A.  
John Funk, A.I.A.  
Gregory Ain, A.I.A.  
Henry Hill, A.I.A.  
Ira J. Bach, A.I.P.  
Konrad Wachsmann  
Hollis S. Baker  
Eduardo F. Catalano  
Paul Rudolph  
Craig Ellwood  
Isamu Noguchi  
Finn Juhl  
George Nelson  
Gyorgy Kepes  
Harriet Janis  
Garrett Eckbo  
Edgar Kaufmann, Jr.  
Dorothy Liebes  
Harry Friedland  
Esther McCoy  
Edward Frank, A.I.D.  
Claire Falkenstein  
Harold W. Grieve, A.I.D.

## CONTENTS FOR AUGUST 1957

### ARTICLES

- A Century of Modern Design by Edgar Kaufmann (Part I) 16  
Design and Human Values by Amiya Chakravarty 22

### ARCHITECTURE

- Case Study House No. 18 by Craig Ellwood Associates 12  
Case Study House No. 19 by Knorr Elliott Associates 14  
House by Harry Seidler, architect 18  
Brussels International and Universal Exhibition 1958 24

### SPECIAL FEATURES

- Mirko 20  
Music 4  
Art 8  
Notes in Passing 11  
Books 30  
Currently Available Product Literature and Information 34

ADVERTISING MANAGER:

Gerald T. Thompson  
3305 Wilshire Boulevard  
Los Angeles 5. DUUnkirk 3-1161

ARTS & ARCHITECTURE is published monthly by John D. Entenza, 3305 Wilshire Boulevard, Los Angeles 5, California. Established 1911. Entered as second class matter January 29, 1935, at the Post Office, Los Angeles, California, under the Act of March 3, 1879. Price mailed to any address in the United States, \$5.00 a year; to foreign countries, \$6.50 a year; single copies 50 cents. Editorial material and subscriptions should be addressed to the Los Angeles office. Return postage should accompany unsolicited manuscripts. One month's notice is required for a change of address or for a new subscription.



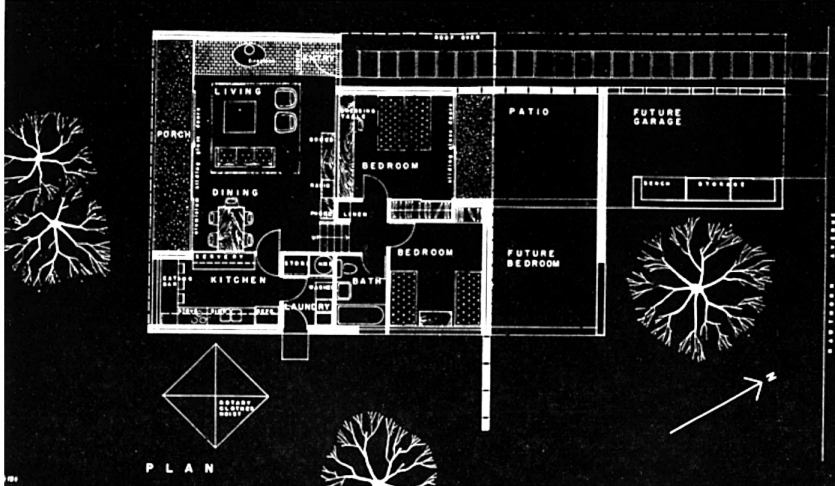
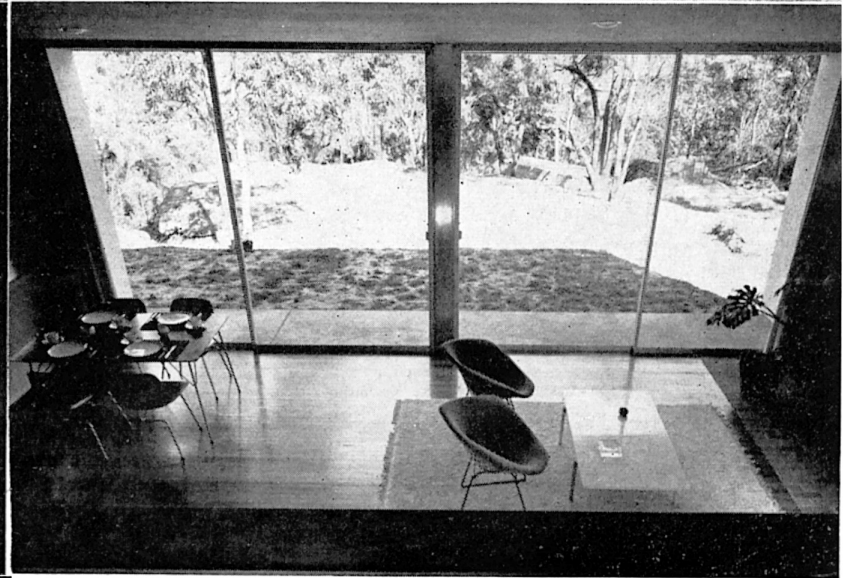
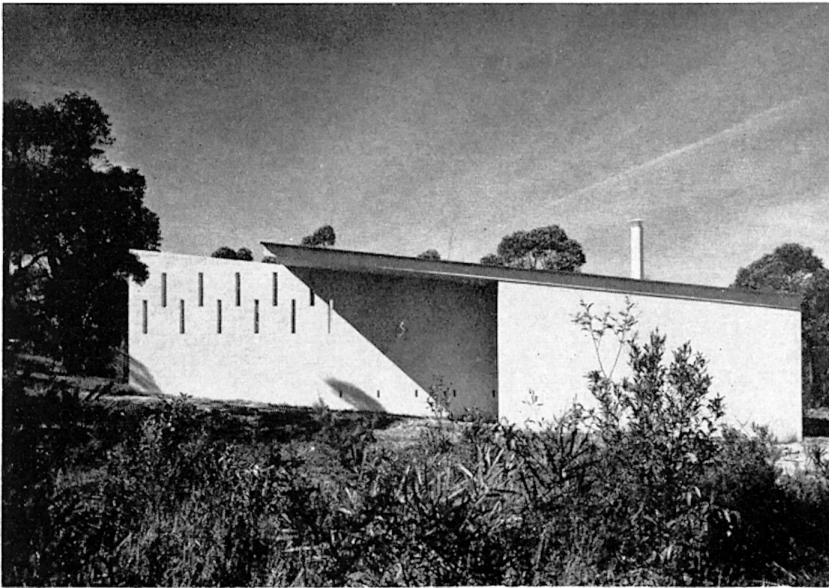
# HOUSE

The site is in a bushland suburb with a slope away from the street and a view on the back over a reserve. The orientation is such that the view is against the sun to the south and the street side on the north.

The solution placed on this block a split-level house with the living, dining and kitchen section on the lower portion overlooking the view and the bedrooms on the higher section toward the street and the sun. In order to gain the advantages of northern sun for the lower level living area the two levels were merged by opening

the main bedroom spatially into the living area with a continuous ceiling surface and a parapet height wall in the bedroom only. This made it possible to see the view from the main bedroom and yet be perfectly private from vision of the lower floor.

To give privacy to the bedroom glass expanse, a patio of solid and grille brick walls was built which will form an enclosed courtyard when the future third bedroom is built and the north wall of the patio will form the rear of a future garage to be built on the street side.



by HARRY SEIDLER, ARCHITECT

The plan has a total area of 1200 square feet for the first stage. Economy of construction is achieved by the use of simple standard materials, white painted common brickwork, deep corrugated asbestos roofing with a special feature in the full-height sliding aluminum glass doors to both living, dining and main bedrooms. The fireplace is made of curved sheet steel and is placed free standing against a wall of the living room.

Color is used on the exterior on the patio wall facing the street

and the solid portion of the kitchen wall facing the rear, which are both deep blue gray. Other bright color accents are on the front door, which is orange, and various other doors and small surfaces on the interior. The wall opposite the glass doors in the living room is lined with vertical T & G hardwood flooring to match the polished floor of the room itself. This and the facebrick hearth and entrance floor form the only textured contrasts to the otherwise painted and aluminum surfaces.