

# arts & architecture

## CONTENTS FOR APRIL 1961

EDITOR: JOHN ENTENZA

### EDITORIAL ASSOCIATES

Dore Ashton  
Herbert Matter  
Jules Langsner  
Peter Yates  
Susan Jonas  
Bernard Rosenthal

### LAYOUT

John Follis  
Charles Kratku  
Frederick A. Usher, Jr.

### EDITORIAL ADVISORY BOARD

Dr. Grace L. McCann Morley  
William Wilson Wurster, F.A.I.A.  
Walter Gropius, F.A.I.A.  
Nathaniel A. Owings, F.A.I.A.  
Richard J. Neutra, F.A.I.A.  
Welton Becket, F.A.I.A.  
George Vernon Russell, F.A.I.A.  
Maynard Lyndon, F.A.I.A.  
Victor Gruen, A.I.A.  
Marcel Breuer, F.A.I.A.  
Paul Thiry, F.A.I.A.  
William L. Pereira, F.A.I.A.  
Harris Armstrong, F.A.I.A.  
Robert E. Alexander, F.A.I.A.  
Gardner A. Dailey, F.A.I.A.  
Whitney R. Smith, F.A.I.A.  
John Rex, F.A.I.A.  
Mario Corbett, A.I.A.  
A. Quincy Jones, F.A.I.A.  
Raphael Soriano, A.I.A.  
Gregory Ain, A.I.A.  
Henry Hill, A.I.A.  
Ira J. Bach, A.I.P.  
Harry Seidler, A.R.A.I.A.  
Konrad Wachsmann  
Paul Rudolph, A.I.A.  
Craig Ellwood  
Isamu Noguchi  
Finn Juhl  
George Nelson, A.I.A.  
Gyorgy Kepes  
Arthur Drexler  
Garrett Eckbo  
Edgar Kaufmann, Jr.  
Dorothy Liebes  
Harry Friedland  
Esther McCoy  
Edward Frank, A.I.D.  
Harold W. Grieve, A.I.D.

### ADVERTISING REPRESENTATIVE:

ANN W. GIST  
490 South San Vicente Boulevard  
Suite 7  
Los Angeles 48, California  
OLive 3-3942

### ARTICLE

---

Architecture and the Cityscape by Catherine Bauer Wurster 14

---

### ARCHITECTURE

---

Towards a Unity—Mies van der Rohe 10

---

Industrial Structure by Franz Fueg, architect 16

---

Underground School by Killingsworth,  
Brady, Smith and Associates, architects 18

---

Two Houses by Richard E. Baringer, architect 20

---

Steel House by Pierre Koenig, architect 22

---

A Planned Community by Niels Stoermer, A.I.P. 24

---

Professional Building by Niels Stoermer,  
A.I.P. and Perry Neuschatz, architect 25

---

House by Donald Olsen, architect 28

---

### SPECIAL FEATURES

---

Art 4

---

Music 6

---

Notes in Passing 9

---

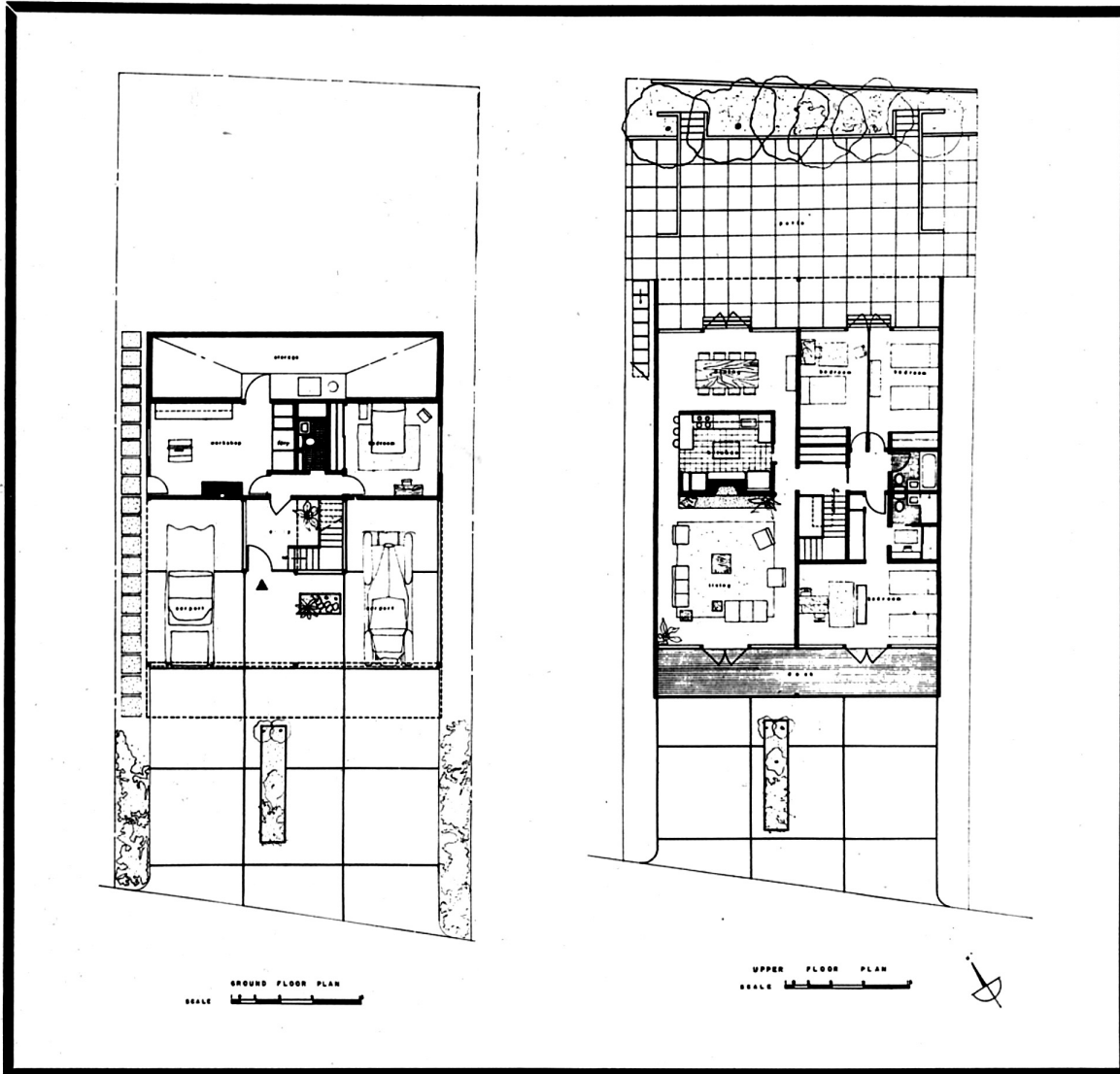
XII Triennale by Esther McCoy 26

---

Currently Available Product Literature and Information 31

---

ARTS & ARCHITECTURE is published monthly by John D. Entenza, 3305 Wilshire Boulevard, Los Angeles 5, California. Established 1911. Second class postage paid at Los Angeles, California. Price mailed to any address in the United States, \$5.00 a year; to foreign countries, \$6.50 a year; single copies 50 cents. Printed by Wayside Press. Editorial material and subscriptions should be addressed to the Los Angeles office. Return postage should accompany unsolicited manuscripts. One month's notice is required for a change of address or for a new subscription. The complete contents of each issue of ARTS & ARCHITECTURE is available to subscribers in a Microfilm edition.



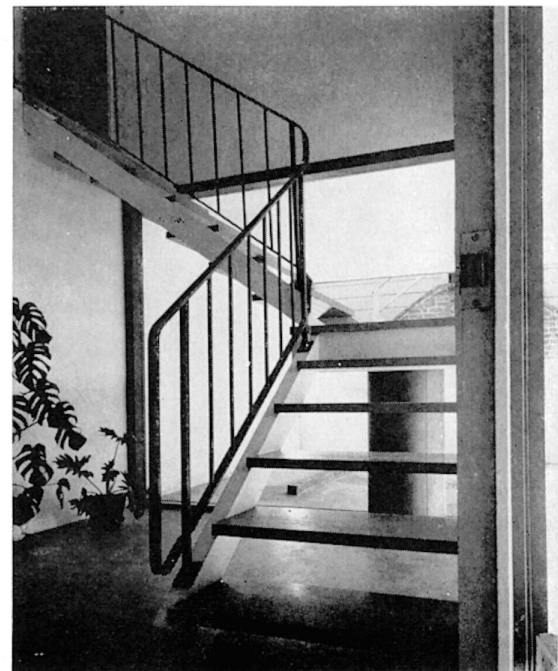
This house on a hill was planned in deference to the view over San Francisco Bay to the front and access to grade at the rear. Thus, the living, kitchen and dining areas carry through from front to rear on one side while the bedroom spaces run from front to rear on the other side, the main bedroom overlooking the view, the children's bedrooms opening to the terrace.

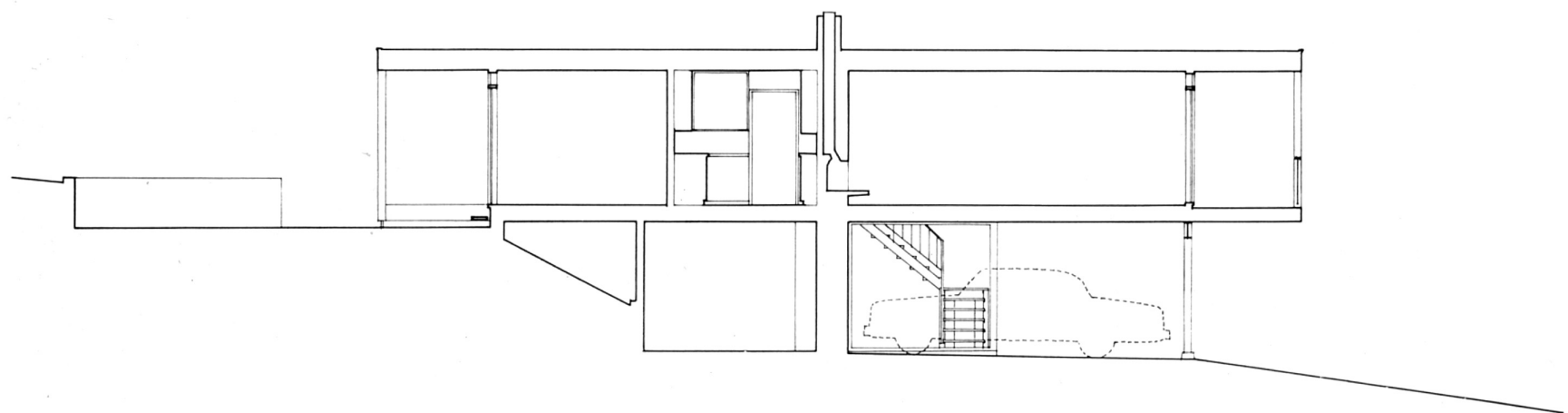
The lower level contains, in addition to the car storage and entrance, a den or fourth bedroom, a bathroom, a general work and play room with laundry equipment, etc., and furnace, water heater and storage.

The exterior finish is white stucco with wood trim painted dark gray. The interior is painted generally white and light gray with a few other colors at selected wardrobe and other doors, etc. Floors are of oak strip stained yellow; the heating system, forced warm air distributed at window perimeter.

The landscaping at the rear is kept simple, directed essentially toward the promotion of privacy.

### HOUSE BY DONALD OLSEN, ARCHITECT





SCALE 1 0 2 5 9 15

