

arts & architecture

CONTENTS FOR JANUARY 1962

EDITOR: JOHN ENTENZA

EDITORIAL ASSOCIATES

Dore Ashton
Herbert Matter
Jules Langsner
Peter Yates
Susan Jonas
Bernard Rosenthal

LAYOUT

John Follis
Charles Kratka
Frederick A. Usher, Jr.

EDITORIAL ADVISORY BOARD

Dr. Grace L. McCann Morley
William Wilson Wurster, F.A.I.A.
Walter Gropius, F.A.I.A.
Nathaniel A. Owings, F.A.I.A.
Richard J. Neutra, F.A.I.A.
Welton Becket, F.A.I.A.
George Vernon Russell, F.A.I.A.
Maynard Lyndon, F.A.I.A.
Victor Gruen, A.I.A.
Marcel Breuer, F.A.I.A.
Paul Thiry, F.A.I.A.
William L. Pereira, F.A.I.A.
Harris Armstrong, F.A.I.A.
Robert E. Alexander, F.A.I.A.
Gardner A. Dailey, F.A.I.A.
Whitney R. Smith, F.A.I.A.
John Rex, F.A.I.A.
Mario Corbett, A.I.A.
A. Quincy Jones, F.A.I.A.
Raphael Soriano, A.I.A.
Gregory Ain, A.I.A.
Henry Hill, A.I.A.
Ira J. Bach, A.I.P.
Harry Seidler, A.R.A.I.A.
Konrad Wachsmann
Paul Rudolph, A.I.A.
Craig Ellwood
Isamu Noguchi
Finn Juhl
George Nelson, A.I.A.
Gyorgy Kepes
Arthur Drexler
Garrett Eckbo
Edgar Kaufmann, Jr.
Dorothy Liebes
Harry Friedland
Esther McCoy
Edward Frank, A.I.D.
Harold W. Grieve, A.I.D.

ADVERTISING REPRESENTATIVES:

Ann W. Gist
490 South San Vicente Boulevard
Suite 7
Los Angeles 48, California
OLive 3-3942

Judson H. Spencer
Archer A. King & Company
410 North Michigan Avenue
Chicago 11, Illinois
Telephone: 644-6763

ARCHITECTURE

Marina City by Bertrand Goldberg Associates, architects	12
Theater Project by Werner Mueller, architect	14
Case Study House No. 25 by Killingsworth, Brady, Smith, architects	16
House in the Mountains by Thomas Houha, architect	24
Country Club by Alper and Alper, architects	26
House by Marquis and Stoller, architects	28

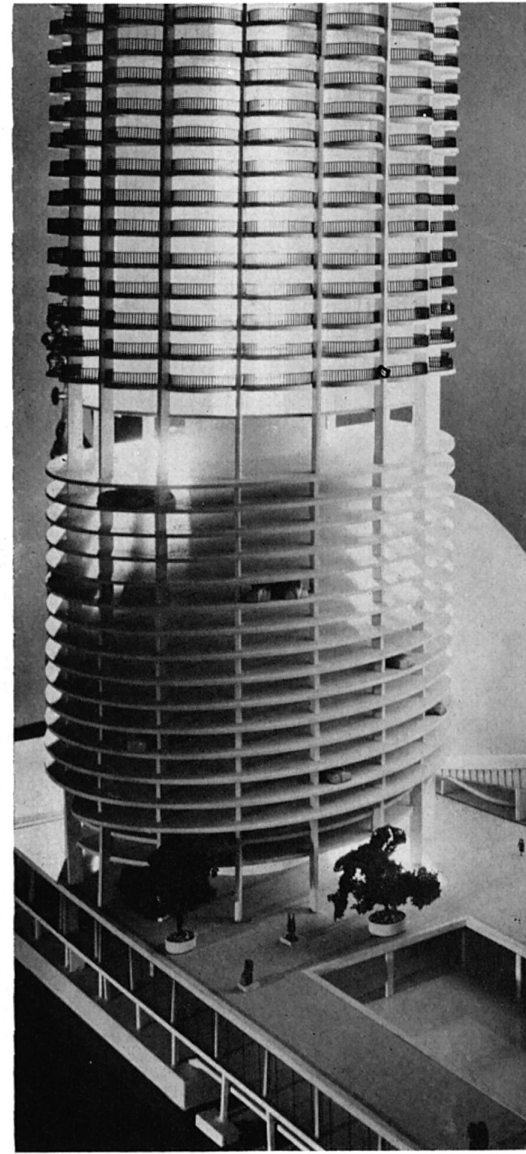
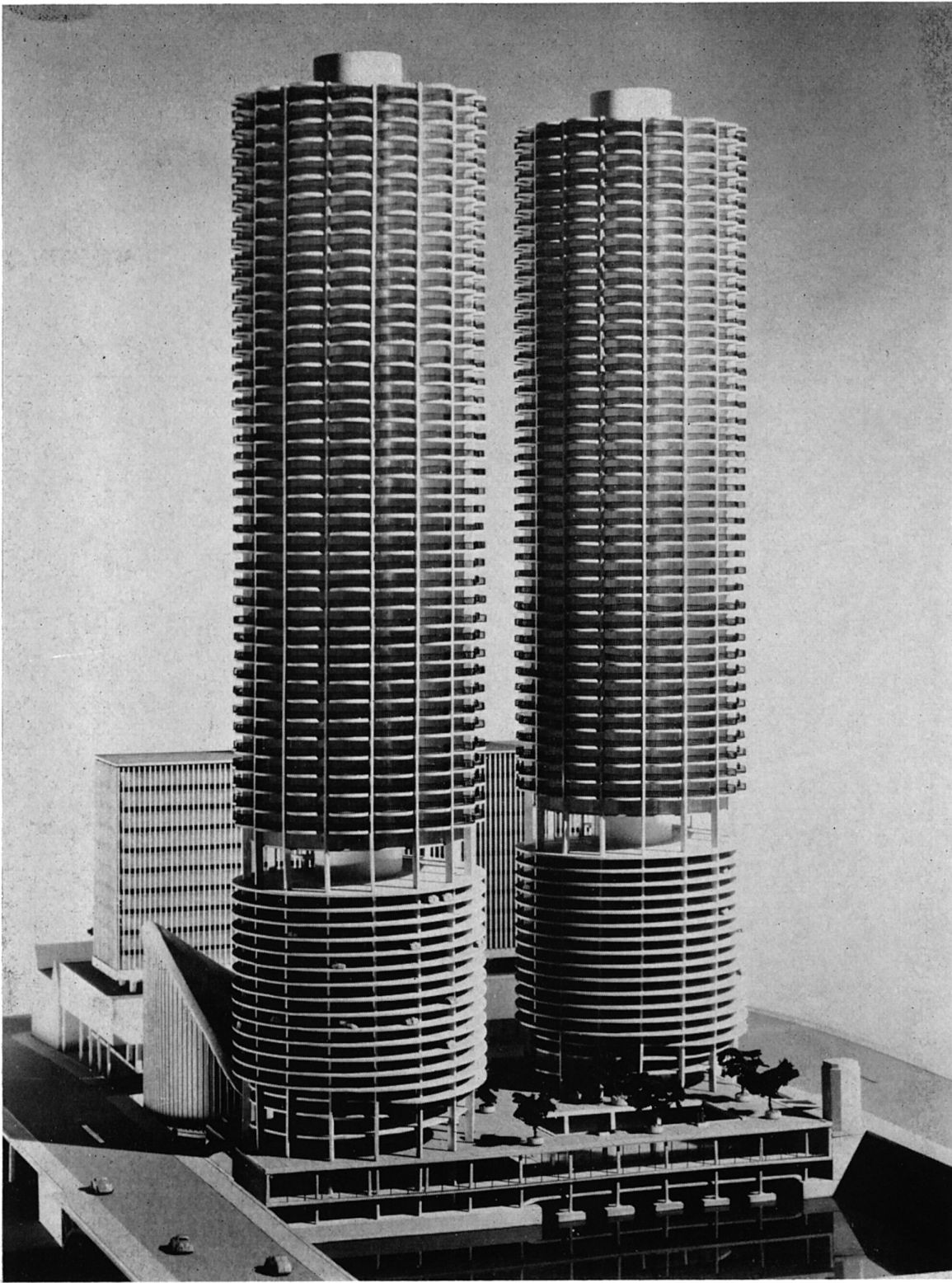
ARTICLE

An Address by Lewis Mumford	20
-----------------------------	----

SPECIAL FEATURES

Art	4
Music	6
Notes in Passing	11
The New Work of Jan de Swart	18
The Art of the Lithograph by Frederick S. Wight	22
Merit Specified Products for Case Study House No. 25	30
Currently Available Product Literature and Information	34

ARTS & ARCHITECTURE is published monthly by John D. Entenza, 3305 Wilshire Boulevard, Los Angeles 5, California. Established 1911. Second class postage paid at Los Angeles, California. Price mailed to any address in the United States, \$5.00 a year; to foreign countries, \$6.50 a year; single copies 50 cents. Printed by Wayside Press. Editorial material and subscriptions should be addressed to the Los Angeles office. Return postage should accompany unsolicited manuscripts. One month's notice is required for a change of address or for a new subscription. The complete contents of each issue of ARTS & ARCHITECTURE is available to subscribers in a Microfilm edition.



MARINA CITY

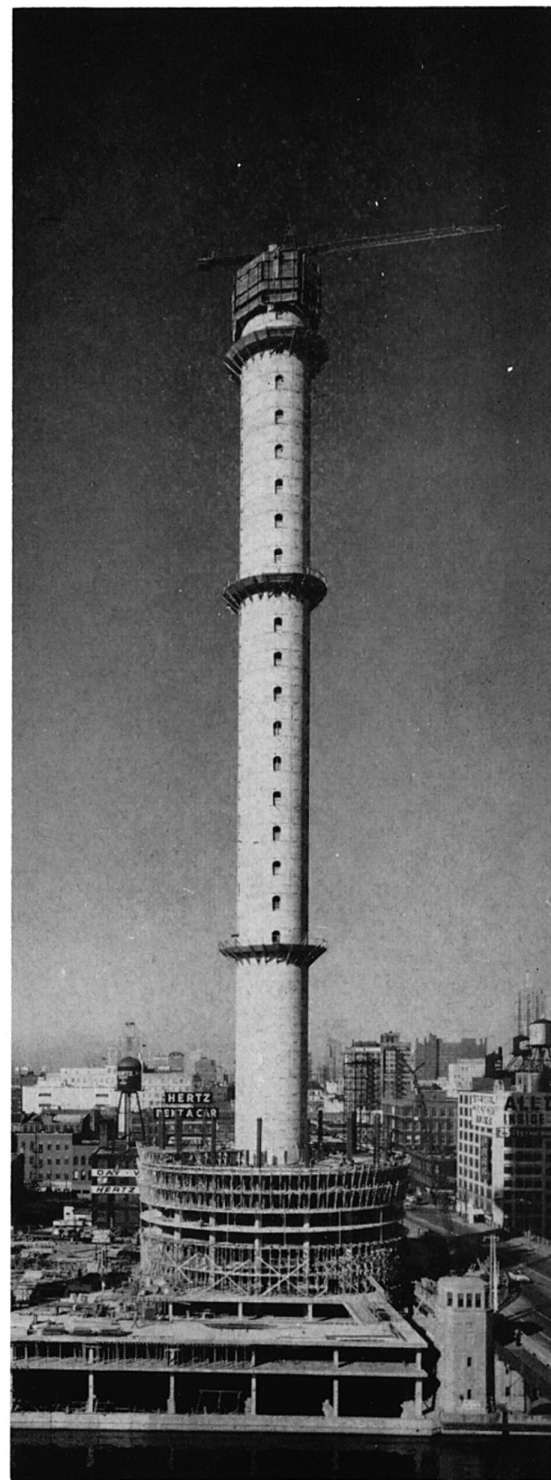
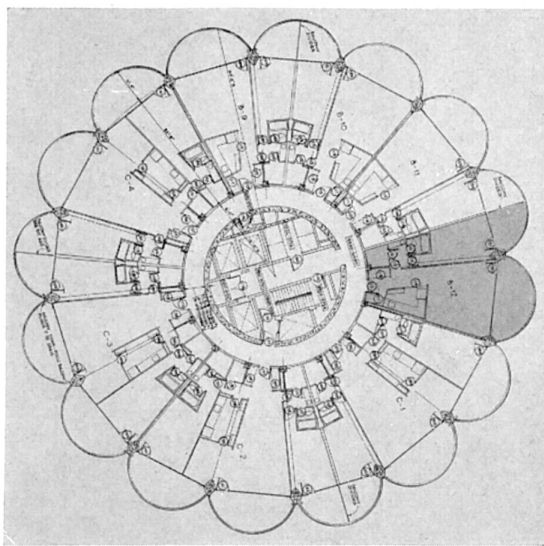
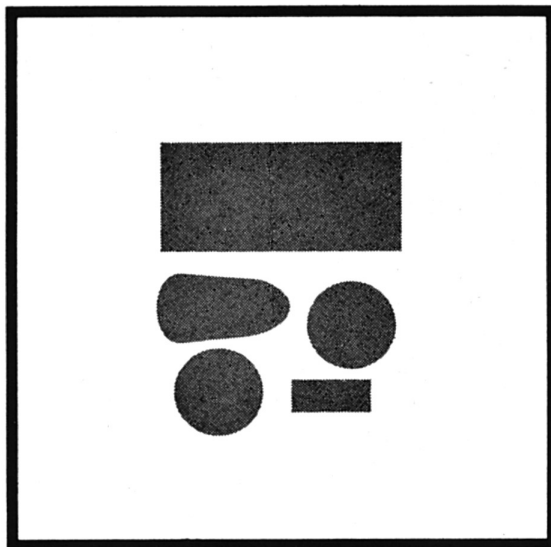
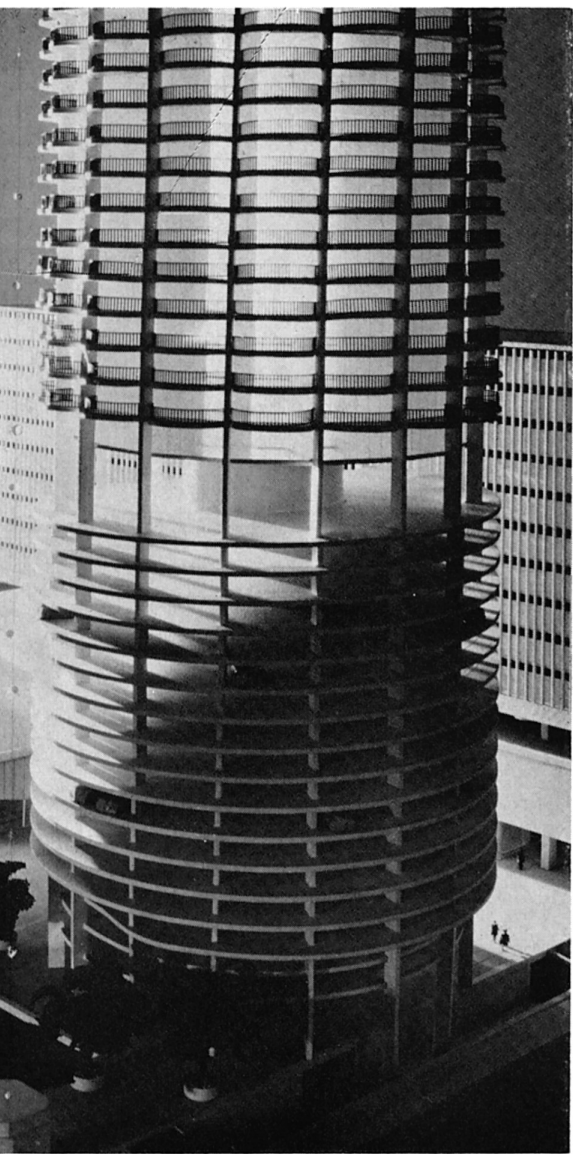
Marina City, located on a 3.1 acre lot on the north bank of the Chicago river, occupies an area just north of the Chicago "Loop" that was known as Block No. 1 in the original town of Chicago. A city within a city, it represents not only an important advance in architecture and concrete engineering but also a new concept in urban living. The social and economic erosion of the downtown centers is a national problem. Marina City points the way to positive solutions of the problem. It is designed to return the essential activities of modern man—work, home, recreation—to a closer, natural association. Dominated by two circular, 60-story apartment towers, it is planned as a 24-hour-a-day city with a wide range of commercial and recreational facilities.

The entire complex includes 896 apartment units (256 efficiency apartments, 576 one-bedroom apartments, and 64 two-bedroom apartments) each room with a private balcony, ramp storage space for 896 cars; 180,000 square feet of commercial space in a 10-floor office building and penthouse; a marina with slips to accommodate 700 boats; year-around swimming and ice-skating; a health club and gymnasium; 54 lanes for bowling; a 1700-seat, 14-story high theater and auditorium building; a plaza for

shops and parks; and 12,000 square feet of auditorium space.

The apartment towers will reach 588 feet with all the service facilities below the 20th floor and the apartments from the 21st to the 60th floor above the city noise and dirt. At the apartment level the towers will be 105 feet in diameter, with the core having an inside diameter of 32 feet. From this rigid core, containing all of the utility components, the apartments radiate in an efficient flower petal plan which places bathrooms and kitchens close to the core. The living areas extend to the periphery of the space development where they combine interior privacy with a 210-degree view from the private balcony of each apartment.

Marina City is being built of reinforced concrete. For casting concrete plastic forms are being used. They are especially suitable for the circular twin towers because of their flexibility for molding into any shape. They also give surface control and produce a final finish for the concrete. The central core, supporting columns and apartment floors tiers are cast with plastic forms. Average space between floors is 8' 6", less than in most apartment dwellings, primarily because electric heating, which does not require added space for ducts, will be employed.



ARCHITECTS AND ENGINEERS:

BERTRAND GOLDBERG ASSOCIATES

SEVERUD ELSTAD KRUEGER
 MORAN PROCTER MUESER & RUTLEDGE
 DR. RALPH PECK

