

**CORRECTION:** In the February issue there was a regrettable omission of a credit line to Glenn Steinberg who took the photograph on the cover

# arts & architecture

## CONTENTS FOR MARCH 1962

**EDITOR:** JOHN ENTENZA

**EDITORIAL ASSOCIATES**

Dore Ashton  
Herbert Matter  
Jules Langsner  
Peter Yates  
Susan Jonas  
Bernard Rosenthal

**LAYOUT**

John Follis  
Charles Kratka  
Frederick A. Usher, Jr.

**EDITORIAL ADVISORY BOARD**

Dr. Grace L. McCann Morley  
William Wilson Wurster, F.A.I.A.  
Walter Gropius, F.A.I.A.  
Nathaniel A. Owings, F.A.I.A.  
Richard J. Neutra, F.A.I.A.  
Welton Becket, F.A.I.A.  
George Vernon Russell, F.A.I.A.  
Maynard Lyndon, F.A.I.A.  
Victor Gruen, A.I.A.  
Marcel Breuer, F.A.I.A.  
Paul Thiry, F.A.I.A.  
William L. Pereira, F.A.I.A.  
Harris Armstrong, F.A.I.A.  
Robert E. Alexander, F.A.I.A.  
Gardner A. Dailey, F.A.I.A.  
Whitney R. Smith, F.A.I.A.  
John Rex, F.A.I.A.  
Mario Corbett, A.I.A.  
A. Quincy Jones, F.A.I.A.  
Raphael Soriano, A.I.A.  
Gregory Ain, A.I.A.  
Henry Hill, A.I.A.  
Ira J. Bach, A.I.P.  
Harry Seidler, A.R.A.I.A.  
Konrad Wachsmann  
Paul Rudolph, A.I.A.  
Craig Ellwood  
Isamu Noguchi  
Finn Juhl  
George Nelson, A.I.A.  
Gyorgy Kepes  
Arthur Drexler  
Garrett Eckbo  
Edgar Kaufmann, Jr.  
Dorothy Liebes  
Harry Friedland  
Esther McCoy  
Edward Frank, A.I.D.  
Harold W. Grieve, A.I.D.

**ADVERTISING REPRESENTATIVES:**

Ann W. Gist  
490 South San Vicente Boulevard  
Suite 7  
Los Angeles 48, California  
OLive 3-3942

Judson H. Spencer  
Archer A. King & Company  
410 North Michigan Avenue  
Chicago 11, Illinois  
Telephone: 644-6763

**ARCHITECTURE**

Small Office Building by Burdette Keeland, Jr. and Associates, architects	10
Hillside House by Victor Gruen Associates, architects	12
Case Study House No. 25 by Killingsworth, Brady, Smith and Associates, architects	18
A Flexible Theater by Peter Blake and David Hays	20
Small House by Pearson and Rawdon, architects	23
House by Pancoast, Ferendino, Skeels & Burnham, architects	24

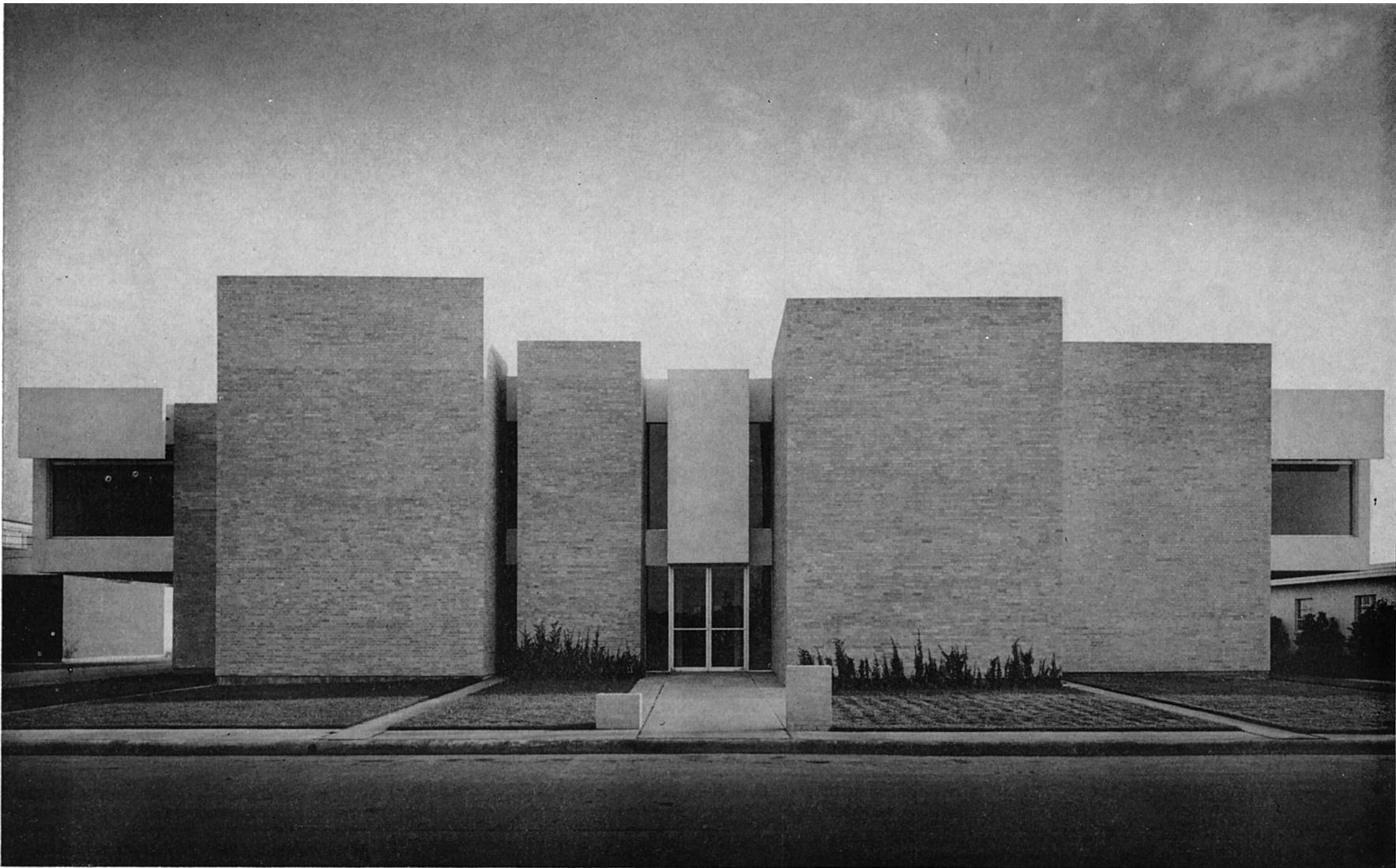
**ARTICLE**

Modern Design—Historical Notes by Alfred Auerbach	16
---	----

**SPECIAL FEATURES**

Music	4
Books	5
Art	6
Notes in Passing	9
New Sculpture—Bernard Rosenthal	14
New Furniture by Edward Frank	26
Merit Specified Products for the Case Study House No. 25	28
Currently Available Product Literature and Information	32

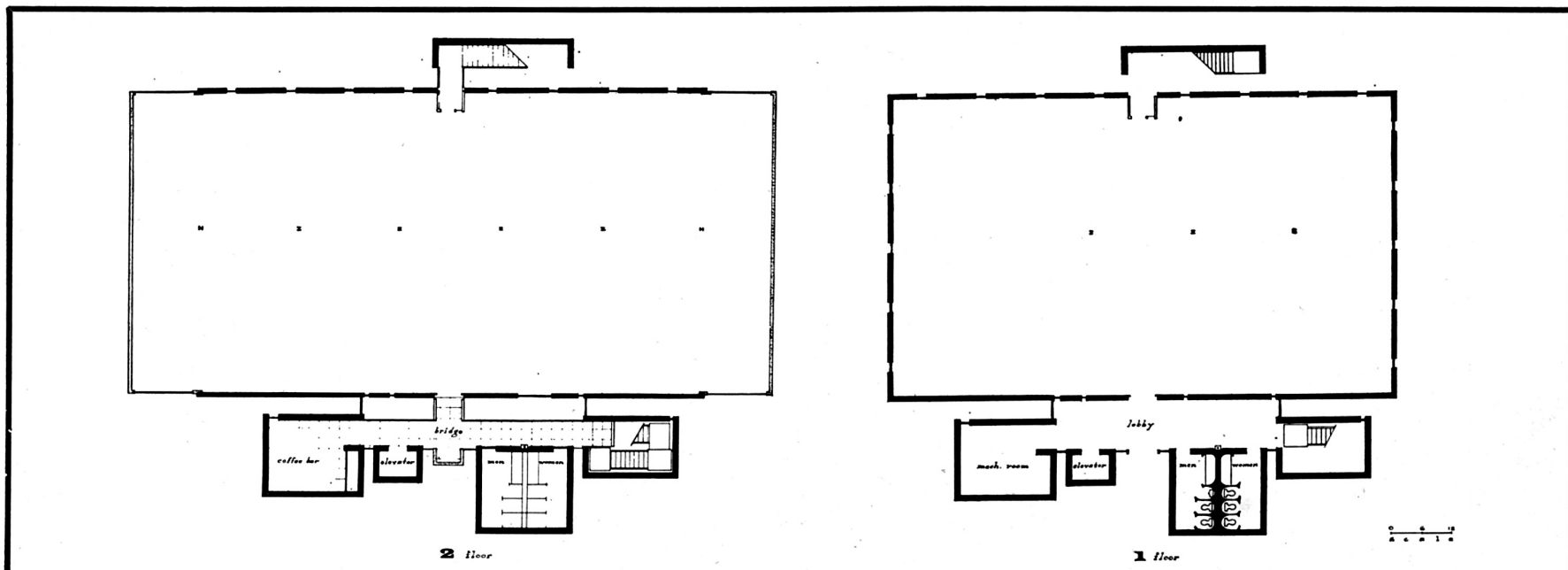
ARTS & ARCHITECTURE is published monthly by John D. Entenza, 3305 Wilshire Boulevard, Los Angeles 5, California. Established 1911. Second class postage paid at Los Angeles, California. Price mailed to any address in the United States, \$5.00 a year; to foreign countries, \$6.50 a year; single copies 50 cents. Printed by Wayside Press. Editorial material and subscriptions should be addressed to the Los Angeles office. Return postage should accompany unsolicited manuscripts. One month's notice is required for a change of address or for a new subscription. The complete contents of each issue of ARTS & ARCHITECTURE is available to subscribers in a Microfilm edition.

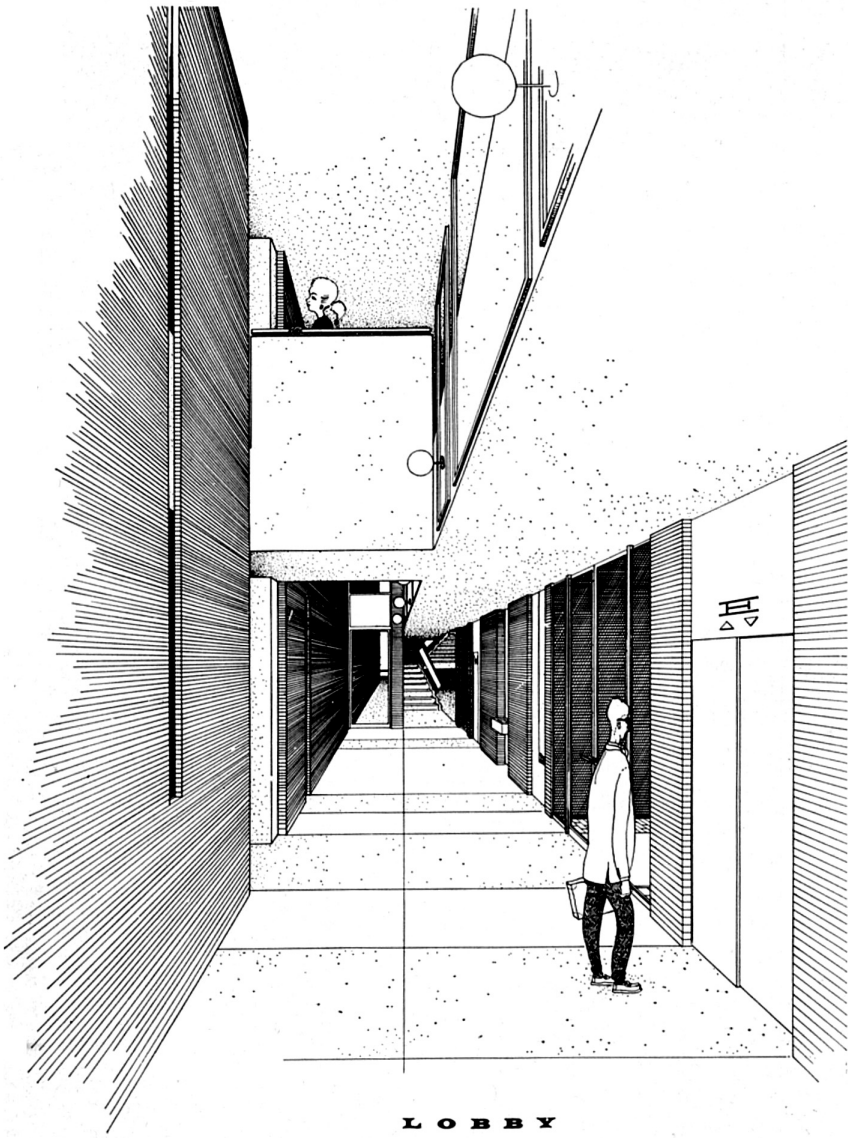


This office building in Houston, Texas, was planned as part of a small industrial and professional complex. Since the project was of a speculative nature, a large area of unhampered space had to be designed. In order to achieve this all of the mechanical equipment, elevators, stairs, coffee bars, and toilets, stand free from the main building, out of the rentable area. This gave the facade a strong look, with the large, heavy brick blocks. All parking is at the rear of the site.

The lobby is two stories high, with a bridge connecting the brick blocks to the rental space. All interior lobby walls are brick and glass with terrazzo floor and acoustical plaster ceilings. The same gray buff brick is used as exterior material with the addition of stucco on the cantilevered sections and sun screens.

**SMALL OFFICE BUILDING BY BURDETTE KEELAND, JR.  
AND ASSOCIATES, ARCHITECTS**





LOBBY

