

# arts & architecture

## CONTENTS FOR SEPTEMBER 1962

EDITOR: JOHN ENTENZA

### EDITORIAL ASSOCIATES

Dore Ashton  
Herbert Matter  
Jules Langsner  
Peter Yates  
Susan Jonas  
Bernard Rosenthal

### LAYOUT

John Follis  
Charles Kratka  
Frederick A. Usher, Jr.

### EDITORIAL ADVISORY BOARD

Dr. Grace L. McCann Morley  
William Wilson Wurster, F.A.I.A.  
Walter Gropius, F.A.I.A.  
Nathaniel A. Owings, F.A.I.A.  
Richard J. Neutra, F.A.I.A.  
Welton Becket, F.A.I.A.  
George Vernon Russell, F.A.I.A.  
Maynard Lyndon, F.A.I.A.  
Victor Gruen, A.I.A.  
Marcel Breuer, F.A.I.A.  
Paul Thiry, F.A.I.A.  
William L. Pereira, F.A.I.A.  
Harris Armstrong, F.A.I.A.  
Robert E. Alexander, F.A.I.A.  
Gardner A. Dailey, F.A.I.A.  
Whitney R. Smith, F.A.I.A.  
John Rex, F.A.I.A.  
Mario Corbett, A.I.A.  
A. Quincy Jones, F.A.I.A.  
Raphael Soriano, F.A.I.A.  
Gregory Ain, A.I.A.  
Henry Hill, A.I.A.  
Ira J. Bach, A.I.P.  
Harry Seidler, A.R.A.I.A.  
Konrad Wachsmann  
Paul Rudolph, A.I.A.  
Craig Ellwood  
Isamu Noguchi  
Finn Juhl  
George Nelson, A.I.A.  
Gyorgy Kepes  
Arthur Drexler  
Garrett Eckbo  
Edgar Kaufmann, Jr.  
Dorothy Liebes  
Harry Friedland  
Esther McCoy  
Edward Frank, A.I.D.  
Harold W. Grieve, A.I.D.

### ADVERTISING REPRESENTATIVE:

Ann W. Gist  
490 South San Vicente Boulevard  
Suite 7  
Los Angeles 48, California  
OLive 3-3942

### ARCHITECTURE

---

Steel House by Pierre Koenig, architect	12
House Designed by J. R. Davidson	16
Office Building Designed by Craig Ellwood Associates	18
Desert House by Richard Neutra, architect	20
Three Projects Designed by Martin Price	24
Small Medical Building by August Perez and Associates, architects	27

### ARTICLE

---

Lewis Mumford and the Design of Criticism by David R. Weimer	14
--	----

### SPECIAL FEATURES

---

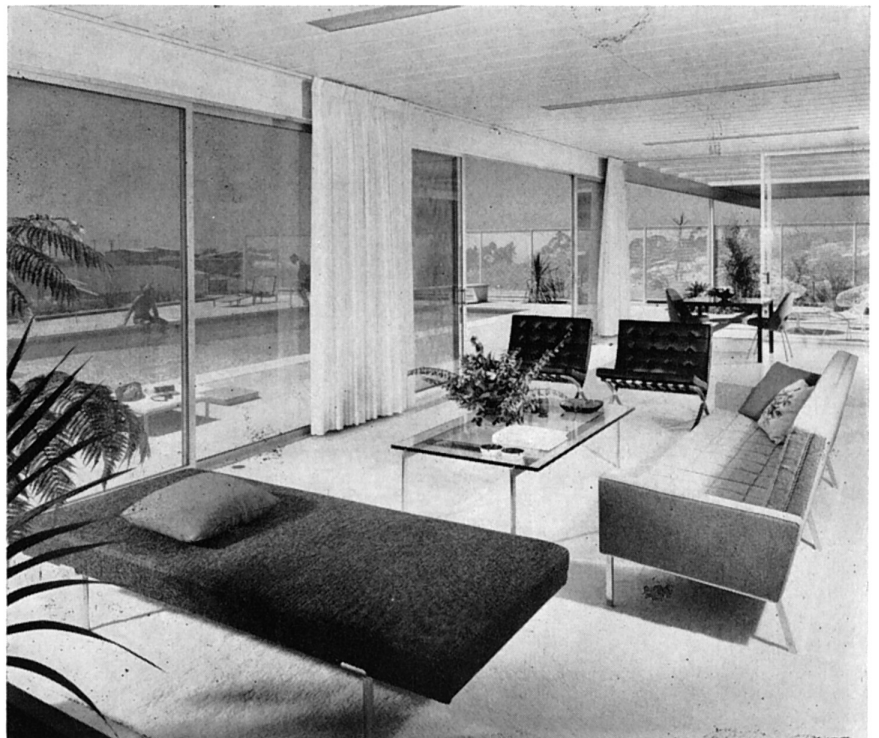
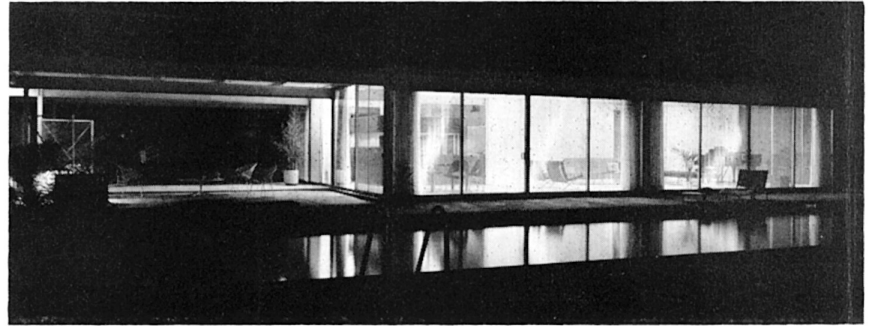
Books	4
Music	6
Notes in Passing	11
Collaboration: Artist and Architect	22
Fabrics	28
Currently Available Product Literature and Information	32

ARTS & ARCHITECTURE is published monthly by Arts & Architecture, Inc., 3305 Wilshire Boulevard, Los Angeles 5, California. Established 1911. Second class postage paid at Los Angeles, California. Price mailed to any address in the United States, \$5.00 a year; to foreign countries, \$6.50 a year; single copies 50 cents. Editorial material and subscriptions should be addressed to the Los Angeles office. Return postage should accompany unsolicited manuscripts. One month's notice is required for a change of address or for a new subscription. The complete contents of each issue of ARTS & ARCHITECTURE is available to subscribers in a Microfilm edition.



**STEEL HOUSE BY PIERRE KOENIG, ARCHITECT**

**WILLIAM PORUSH, STRUCTURAL ENGINEER**





The site of this house on the Pacific coast, near Los Angeles, is on a leveled lot on a gently sloping hill. The clients' request for an unlimited view and complete pool integration with everyday living were met with a pavilion of glass in a rigid steel frame. Maximum use of the 100x175' site was obtained by utilizing a rectangular plan parallel to a rear bank and far enough away from the front slope for the 18x60' swimming pool. Mechanical pool equipment was placed at the bottom of the slope, out of view from the house.

The informal dining area, living area, and study face the pool on the west side of the house. Light blue louvered sun screens protect the

west and south elevations. Additional thermal control was provided by Fiberglas roof insulation. Sliding doors, 23 feet wide, open onto the pool deck.

Two patios on the east side provide outdoor eating and fire pit areas. A canopied entryway separates these two wind-shielded spaces. The service and storage areas are adjacent to the carport for sound isolation and are related to the house by the entryway canopy.

The open kitchen, which can be closed off by interior sliding doors, is centrally located to four eating areas and the pool deck. The kitchen and the two baths form a central core that separates the general

*(Continued on page 30)*

