

Cover photo by Isamu  
Noguchi: *Astronomical  
Instruments, Jaipur, India; from  
"Architecture without Architects."*

# arts & architecture

## CONTENTS FOR MARCH 1965

EDITOR: David Travers

### EDITORIAL ASSOCIATES

Amir Farr  
Dore Ashton  
Peter Yates  
Esther McCoy  
Alfred Auerbach

### LAYOUT

John Fallis  
John Gilchrist

### EDITORIAL ADVISORY BOARD

John Entenza  
William Wilson Wurster, F.A.I.A.  
Walter Gropius, F.A.I.A.  
Nathaniel A. Owings, F.A.I.A.  
Richard J. Neutra, F.A.I.A.  
Welton Becket, F.A.I.A.  
George Vernon Russell, F.A.I.A.  
Maynard Lyndon, F.A.I.A.  
Victor Gruen, F.A.I.A.  
Marcel Breuer, F.A.I.A.  
Paul Thiry, F.A.I.A.  
William L. Pereira, F.A.I.A.  
Harris Armstrong, F.A.I.A.  
Robert E. Alexander, F.A.I.A.  
John Rex, F.A.I.A.  
A. Quincy Jones, F.A.I.A.  
Whitney R. Smith, F.A.I.A.  
Gregory Ain, A.I.A.  
Pierre Koenig, A.I.A.  
Ira J. Bach, A.I.P.  
Harry Seidler, A.R.A.I.A.  
Konrad Wachsmann  
Paul Rudolph, A.I.A.  
Craig Ellwood  
Isamu Noguchi  
Finn Juhl  
George Nelson, F.A.I.A.  
Gyorgy Kepes  
Arthur Drexler  
Garrett Eckbo, F.A.S.L.A.  
Edgar Kaufmann, Jr.  
Dorothy Liebes  
Harry Friedland  
Herbert Matter  
Edward Frank, A.I.D.  
Harold W. Grieve, A.I.D.

PRODUCTION MANAGER  
F. Stuart

CIRCULATION MANAGER  
Paula Jones

ADVERTISING REPRESENTATIVE  
Arden E. Roney & Associates  
580 South San Vicente Boulevard  
Los Angeles, California 90048  
651-3930

### ARTICLE

---

The Changing Landscape by Joyce Earley Lyndon 20

---

### ARCHITECTURE

---

Pulliam, Zimmerman & Matthews, Architects 14

---

Samuel Dory Carson, Architect 16

---

Architecture without Architects by Bernard Rudofsky 18

---

International / Recent Italian Residential Architecture  
Mario Brunati and Sandro Mendini, Architects 26

---

Franco Albini and Franca Helg, Architects 28

---

Mario Brunati and Sandro Mendini, Architects 30

---

Roberto Menghi, Architect 31

---

Ettore Sottsass, Jr., Architect 32

---

Carlo Santi and Vittorio Borachia, Architects 33

---

### PLANNING

---

Chicago Planning by Ira Bach 9

---

### ARTS

---

Art 6

---

Music 8

---

Books 10

---

### FEATURES

---

Notes in Passing 13

---

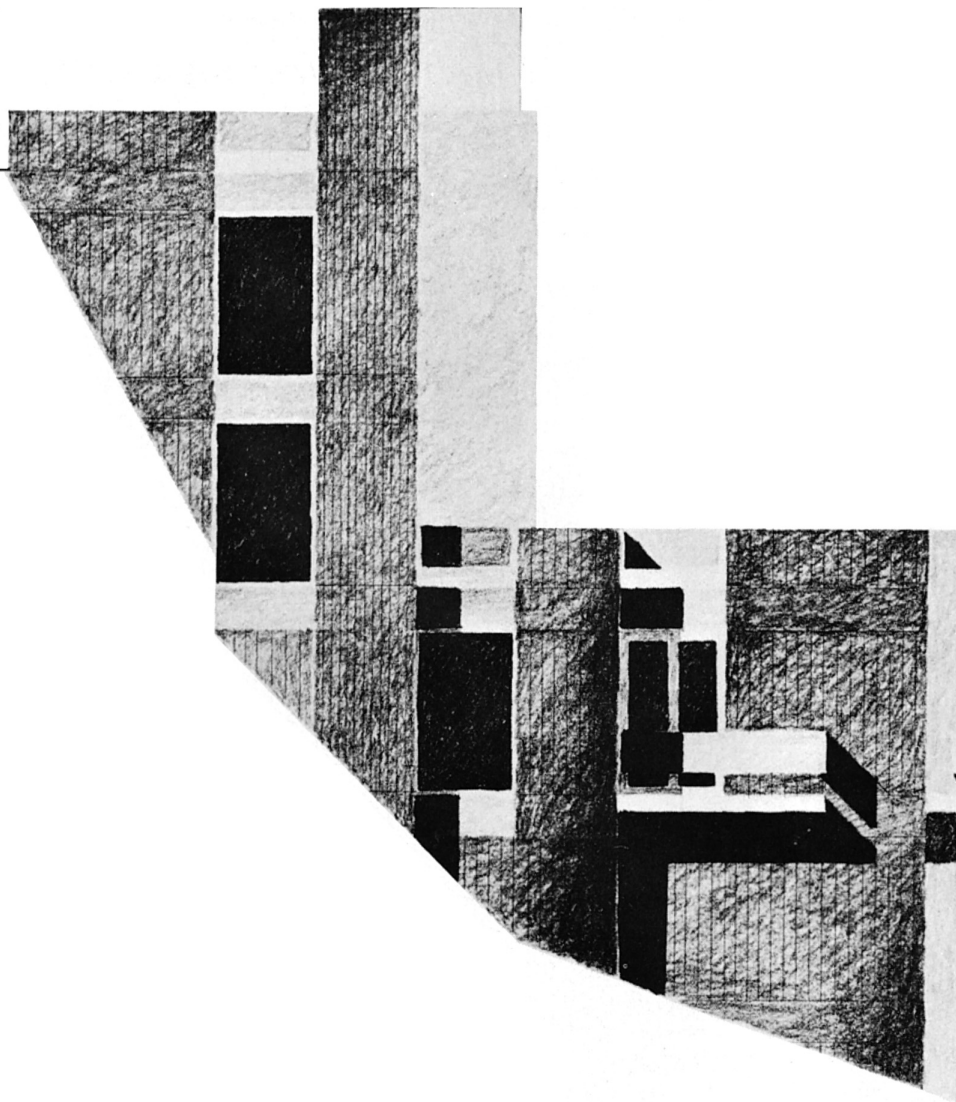
Power Styling 23

---

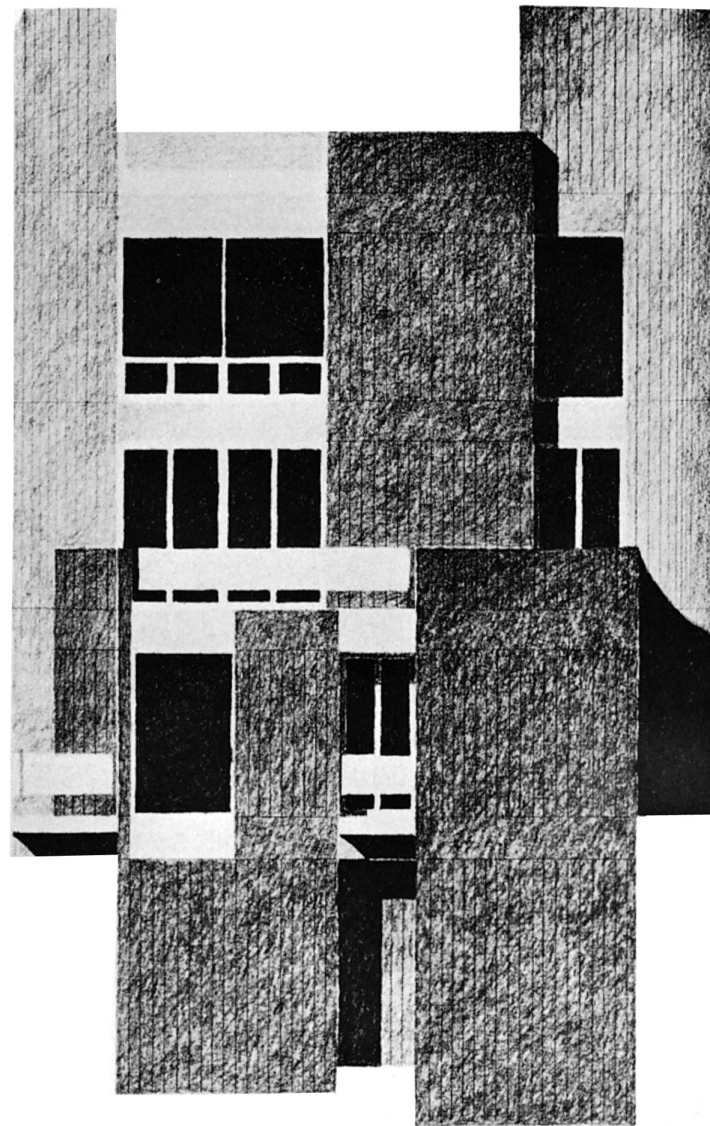
Reader Service — Product Literature and Information 37

---

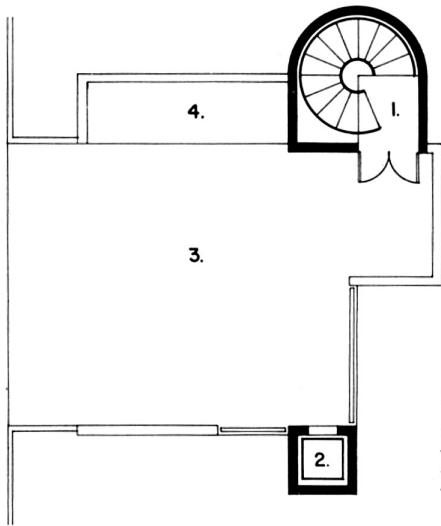
ARTS & ARCHITECTURE is published monthly by Arts & Architecture, Inc., 3305 Wilshire Boulevard, Los Angeles 5, California. Established 1911. Second class postage paid at Los Angeles, California. Priced mailed to any address in the United States, \$7.00 a year; to foreign countries, \$8.50 a year; single copies 75 cents. Editorial material and subscriptions should be addressed to the Los Angeles office. Return postage should accompany unsolicited manuscripts. One month's notice is required for a change of address or for a new subscription. The complete contents of each issue of ARTS & ARCHITECTURE is available to subscribers in a Microfilm edition.



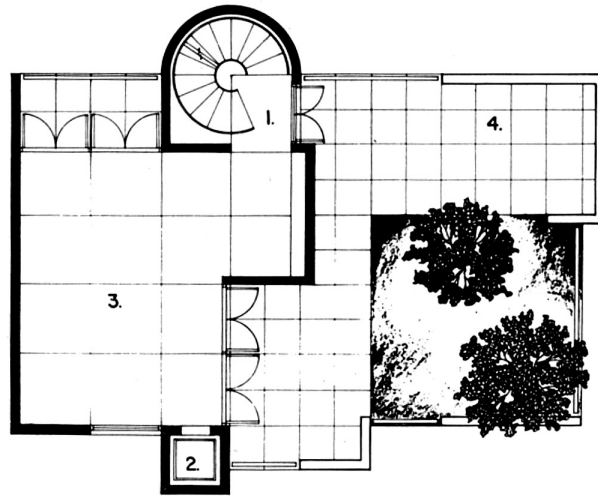
West Elevation



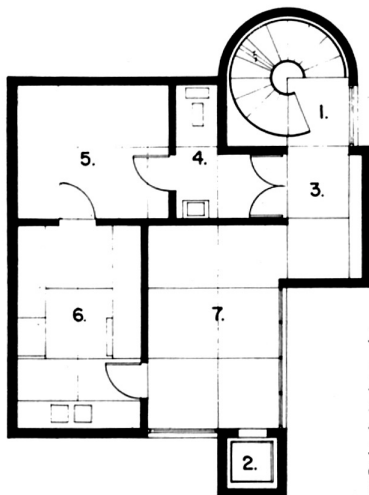
South Elevation



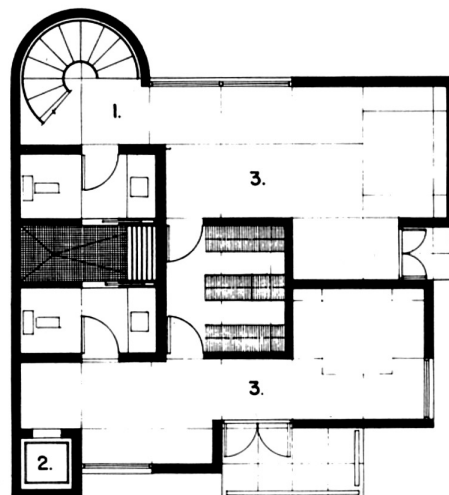
Top Level  
 1. stair  
 2. elevator  
 3. parking  
 4. storage



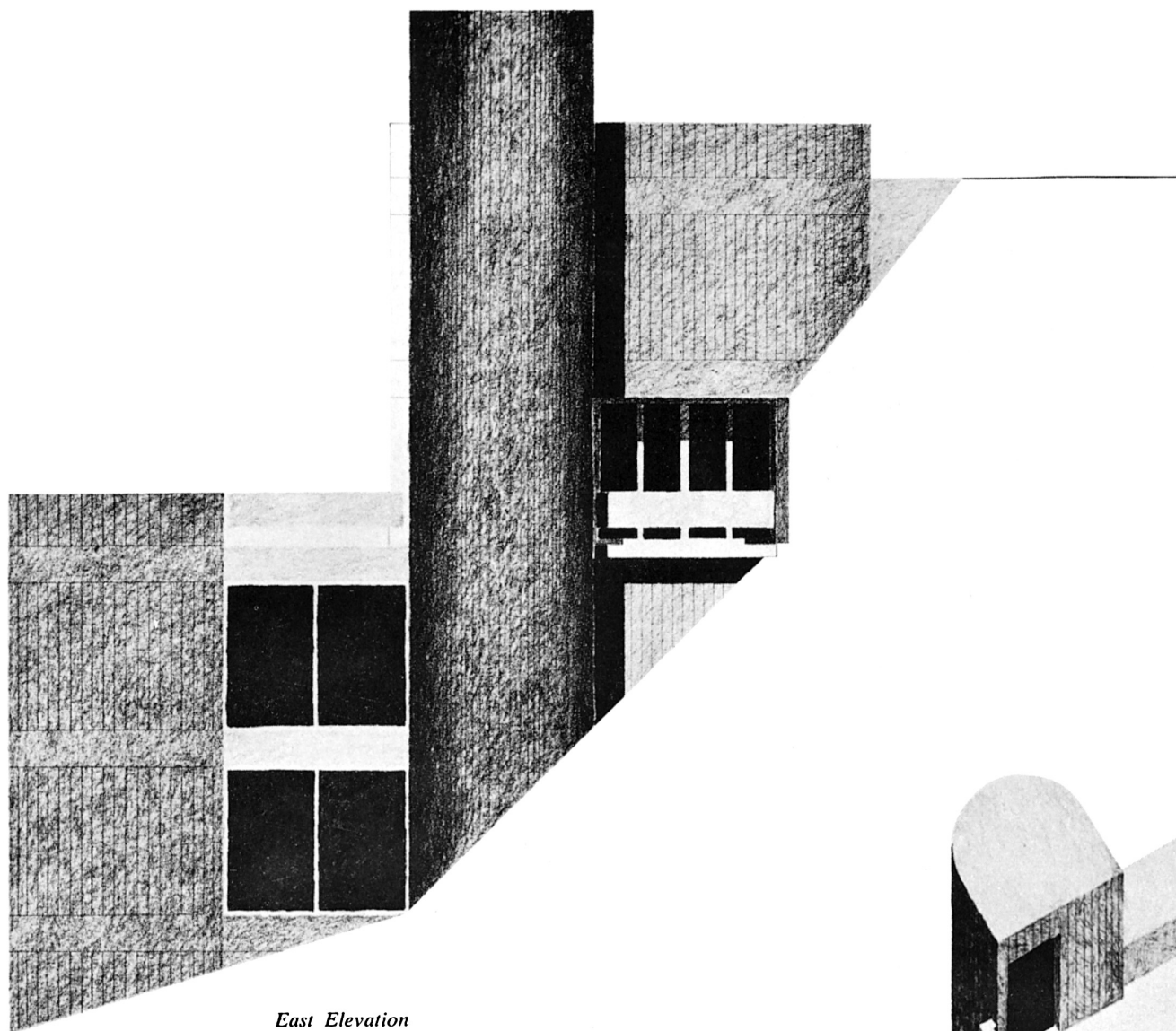
3rd Level  
 1. stair  
 2. elevator  
 3. living room  
 4. terrace



2nd Level  
 1. stair  
 2. elevator  
 3. entry  
 4. powder room  
 5. utility  
 6. kitchen  
 7. dining



Lower Level  
 1. stair  
 2. elevator  
 3. bedroom



*East Elevation*

## SAMUEL DORY CARSON, ARCHITECT

The house was designed for two brothers, both architects. The site is a narrow lot in the Hollywood Hills, no longer a fashionable address but with a fine view to the south and west.

It is the belief of the architect that the problem of the hillside house is seldom approached properly; that instead of putting the structure on stilts, it should become a part of the hill and its environment. It was this concept that designed the house, although zoning regulations and building codes which prohibit more than three stories prevented carrying this philosophy to its zenith.

The 2400-square-foot house is constructed of concrete bearing walls with rough board formwork exposed inside and out. The concrete is to be left unpainted, though waterproofed. Some walls inside will be painted in strong colors, and floors are to be hardwood on wood joists.

Entry is from the top level with parking for two cars; parking will be left uncovered to comply with the three-story zoning regulation. The next level down contains entry, dining room, kitchen and utility room. The middle level is the living area with balconies and terraces. Beneath that are bedrooms each of which will have work or study areas. The lowest level will contain a studio, to be finished at some later date unbeknownst to the building department.

